

A12617

Leader in Biomolecular Solutions for Life Science



# TUBB8 Rabbit pAb

Catalog No.: A12617

## Basic Information

### Observed MW

55kDa

### Calculated MW

50kDa

### Category

Polyclonal Antibody

### Applications

WB,IF/ICC,ELISA

### Cross-Reactivity

Human

## Background

The protein encoded by this gene represents the primary beta-tubulin subunit of oocytes and the early embryo. Defects in this gene, which is primate-specific, are a cause of oocyte maturation defect 2 and infertility.

## Recommended Dilutions

**WB** 1:500 - 1:1000

**IF/ICC** 1:50 - 1:200

**ELISA** Recommended starting concentration is 1 µg/mL. Please optimize the concentration based on your specific assay requirements.

## Immunogen Information

### Gene ID

347688

### Swiss Prot

Q3ZCM7

### Immunogen

A synthetic peptide corresponding to a sequence within amino acids 344-444 of human TUBB8 (NP\_817124.1).

### Synonyms

OOMD; OOMD2; OZEMA2; bA631M21.2; TUBB8

## Contact

 [www.abclonal.com](http://www.abclonal.com)

## Product Information

### Source

Rabbit

### Isotype

IgG

### Purification

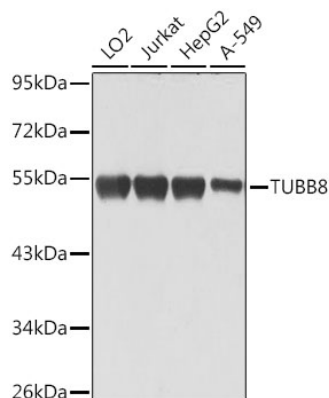
Affinity purification

### Storage

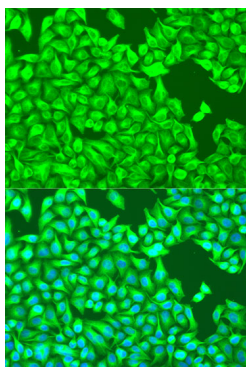
Store at -20°C. Avoid freeze / thaw cycles.

Buffer: PBS with 0.02% sodium azide, 50% glycerol, pH7.3.

## Validation Data



Western blot analysis of various lysates using TUBB8 Rabbit pAb (A12617) at 1:1000 dilution.  
Secondary antibody: HRP-conjugated Goat anti-Rabbit IgG (H+L) (AS014) at 1:10000 dilution.  
Lysates/proteins: 25µg per lane.  
Blocking buffer: 3% nonfat dry milk in TBST.  
Detection: ECL Basic Kit (RM00020).  
Exposure time: 1s.



Immunofluorescence analysis of U2OS cells using TUBB8 Rabbit pAb (A12617) at dilution of 1:100.  
Secondary antibody: Cy3-conjugated Goat anti-Rabbit IgG (H+L) (AS007) at 1:500 dilution. Blue: DAPI for nuclear staining.