

A12582

Leader in Biomolecular Solutions for Life Science



METTL13 Rabbit pAb

Catalog No.: A12582

Basic Information

Observed MW

85kDa

Calculated MW

79kDa

Category

Polyclonal Antibody

Applications

WB,IF/ICC,ELISA

Cross-Reactivity

Human

Background

Predicted to enable methyltransferase activity. Involved in negative regulation of cell cycle G1/S phase transition and negative regulation of transcription by RNA polymerase II. Predicted to be located in mitochondrion and nucleus.

Recommended Dilutions

WB 1:500 - 1:2000

IF/ICC 1:50 - 1:100

ELISA Recommended starting concentration is 1 µg/mL. Please optimize the concentration based on your specific assay requirements.

Immunogen Information

Gene ID

51603

Swiss Prot

Q8N6R0

Immunogen

Recombinant fusion protein containing a sequence corresponding to amino acids 430-699 of human METTL13 (NP_057019.3).

Synonyms

feat; DFNM1; CGI-01; DFNB26; DFNB26M; KIAA0859; EEF1AKNMT; 5630401D24Rik; METTL13

Contact



www.abclonal.com

Product Information

Source

Rabbit

Isotype

IgG

Purification

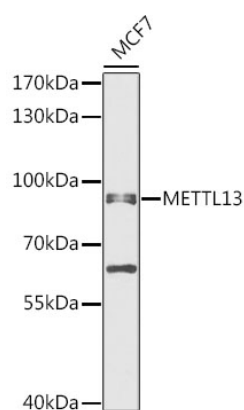
Affinity purification

Storage

Store at -20°C. Avoid freeze / thaw cycles.

Buffer: PBS with 0.02% sodium azide, 50% glycerol, pH7.3.

Validation Data



Western blot analysis of lysates from MCF7 cells, using METTL13 Rabbit pAb (A12582) at 1:1000 dilution.

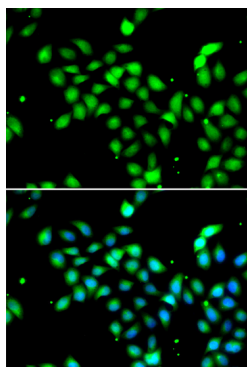
Secondary antibody: HRP-conjugated Goat anti-Rabbit IgG (H+L) (AS014) at 1:10000 dilution.

Lysates/proteins: 25µg per lane.

Blocking buffer: 3% nonfat dry milk in TBST.

Detection: ECL Enhanced Kit (RM00021).

Exposure time: 30s.



Immunofluorescence analysis of A549 cells using METTL13 Rabbit pAb (A12582). Secondary antibody: Cy3-conjugated Goat anti-Rabbit IgG (H+L) (AS007) at 1:500 dilution. Blue: DAPI for nuclear staining.