

A12562

Leader in Biomolecular Solutions for Life Science



www.abclonal.com

CTCF Rabbit pAb

Catalog No.: A12562

Basic Information

Observed MW

131kDa

Calculated MW

83kDa

Category

Polyclonal Antibody

Applications

WB,IP,ChIP,ELISA

Cross-Reactivity

Human,Mouse,Rat

Background

This gene is a member of the BORIS + CTCF gene family and encodes a transcriptional regulator protein with 11 highly conserved zinc finger (ZF) domains. This nuclear protein is able to use different combinations of the ZF domains to bind different DNA target sequences and proteins. Depending upon the context of the site, the protein can bind a histone acetyltransferase (HAT)-containing complex and function as a transcriptional activator or bind a histone deacetylase (HDAC)-containing complex and function as a transcriptional repressor. If the protein is bound to a transcriptional insulator element, it can block communication between enhancers and upstream promoters, thereby regulating imprinted expression. Mutations in this gene have been associated with invasive breast cancers, prostate cancers, and Wilms' tumors. Alternatively spliced transcript variants encoding different isoforms have been found for this gene.

Recommended Dilutions

WB 1:500 - 1:1000

IP 1:50 - 1:100

ELISA Recommended starting concentration is 1 µg/mL. Please optimize the concentration based on your specific assay requirements.

ChIP 5µg antibody for 10µg-15µg of Chromatin

Contact

 www.abclonal.com

Immunogen Information

Gene ID

10664

Swiss Prot

P49711

Immunogen

Recombinant protein (or fragment). This information is considered to be commercially sensitive.

Synonyms

MRD21; FAP108; CFAP108; CTCF

Product Information

Source

Rabbit

Isotype

IgG

Purification

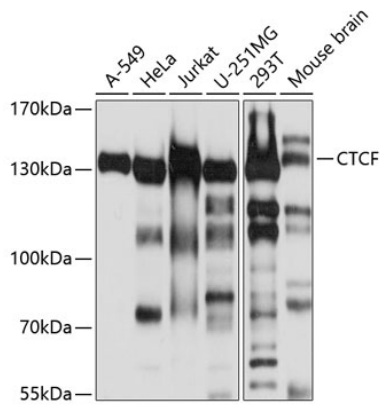
Affinity purification

Storage

Store at -20°C. Avoid freeze / thaw cycles.

Buffer: PBS with 0.02% sodium azide, 50% glycerol, pH7.3.

Validation Data



Western blot analysis of various lysates using CTCF Rabbit pAb (A12562) at 1:500 dilution.

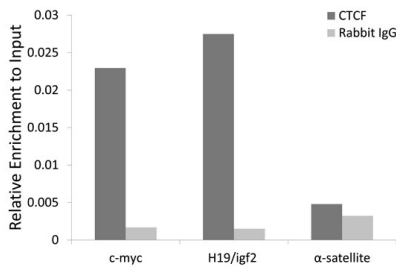
Secondary antibody: HRP-conjugated Goat anti-Rabbit IgG (H+L) (AS014) at 1:10000 dilution.

Lysates/proteins: 25µg per lane.

Blocking buffer: 3% nonfat dry milk in TBST.

Detection: ECL Basic Kit (RM00020).

Exposure time: 5s.



Chromatin immunoprecipitation of extracts of HCT116 cell line, using CTCF antibody (A12562) and rabbit IgG. The amount of immunoprecipitated DNA was checked by quantitative PCR. Histogram was constructed by the ratios of the immunoprecipitated DNA to the input.