

A12533

Leader in Biomolecular Solutions for Life Science



SLC30A1 Rabbit pAb

Catalog No.: A12533

Basic Information

Observed MW

55kDa

Calculated MW

55kDa

Category

Polyclonal Antibody

Applications

WB,ELISA

Cross-Reactivity

Mouse,Rat

Background

Predicted to enable calcium channel inhibitor activity and zinc ion transmembrane transporter activity. Predicted to be involved in several processes, including cellular divalent inorganic cation homeostasis; inorganic cation transmembrane transport; and negative regulation of transport. Predicted to act upstream of or within in utero embryonic development. Located in several cellular components, including Golgi apparatus; endoplasmic reticulum; and nuclear membrane.

Recommended Dilutions

WB 1:500 - 1:2000

ELISA Recommended starting concentration is 1 µg/mL. Please optimize the concentration based on your specific assay requirements.

Immunogen Information

Gene ID

7779

Swiss Prot

Q9Y6M5

Immunogen

Recombinant fusion protein containing a sequence corresponding to amino acids 328-507 of human SLC30A1 (NP_067017.2).

Synonyms

ZNT1; ZRC1; SLC30A1

Contact



www.abclonal.com

Product Information

Source

Rabbit

Isotype

IgG

Purification

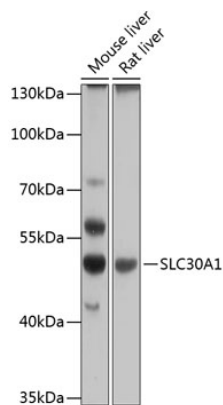
Affinity purification

Storage

Store at -20°C. Avoid freeze / thaw cycles.

Buffer: PBS with 0.02% sodium azide, 50% glycerol, pH7.3.

Validation Data



Western blot analysis of various lysates using SLC30A1 Rabbit pAb (A12533) at 1:1000 dilution.
Secondary antibody: HRP-conjugated Goat anti-Rabbit IgG (H+L) (AS014) at 1:10000 dilution.
Lysates/proteins: 25µg per lane.
Blocking buffer: 3% nonfat dry milk in TBST.
Detection: ECL Basic Kit (RM00020).
Exposure time: 30s.