

A12409

Leader in Biomolecular Solutions for Life Science



DNA topoisomerase I (TOP1) Rabbit mAb

Catalog No.: A12409

Recombinant

4 Publications

Basic Information

Observed MW

100kDa

Calculated MW

91kDa

Category

SMab Recombinant Monoclonal
Antibody

Applications

WB,IHC-P,IF/ICC,IP,ELISA

Cross-Reactivity

Human,Mouse,Rat

CloneNo number

ARC0708

Background

This gene encodes a DNA topoisomerase, an enzyme that controls and alters the topologic states of DNA during transcription. This enzyme catalyzes the transient breaking and rejoining of a single strand of DNA which allows the strands to pass through one another, thus altering the topology of DNA. This gene is localized to chromosome 20 and has pseudogenes which reside on chromosomes 1 and 22.

Recommended Dilutions

WB 1:1000 - 1:6000

IHC-P 1:200 - 1:800

IF/ICC 1:100 - 1:1000

IP 0.5µg-4µg antibody for
200µg-400µg extracts
of whole cells

ELISA Recommended starting
concentration is 1
µg/mL. Please optimize
the concentration
based on your specific
assay requirements.

Immunogen Information

Gene ID

7150

Swiss Prot

P11387

Immunogen

A synthetic peptide corresponding to a sequence within amino acids 1-100 of human DNA topoisomerase I (TOP1) (P11387).

Synonyms

TOPI; DNA topoisomerase I (TOP1)

Product Information

Source

Rabbit

Isotype

IgG

Purification

Affinity purification

Storage

Store at -20°C. Avoid freeze / thaw cycles.

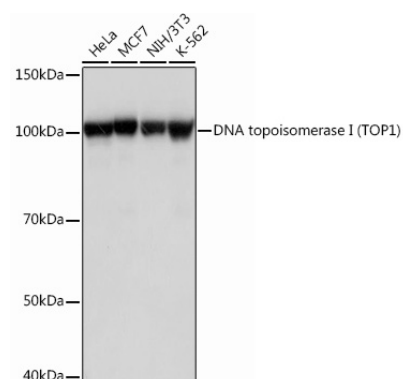
Buffer: PBS with 0.02% sodium azide,0.05% BSA,50% glycerol,pH7.3.

Contact

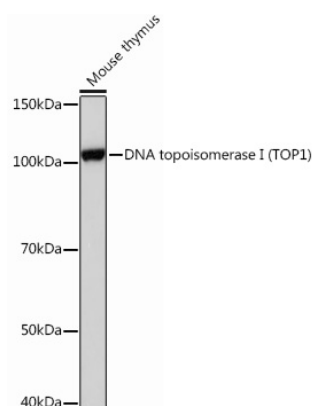


www.abclonal.com

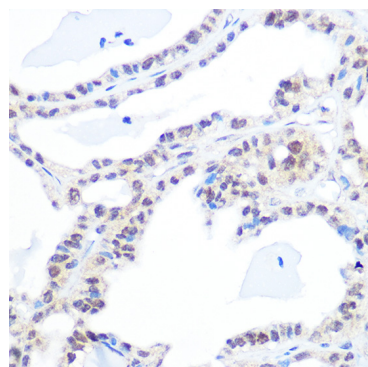
Validation Data



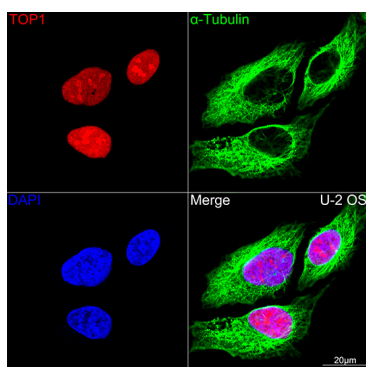
Western blot analysis of various lysates using DNA topoisomerase I (DNA topoisomerase I (TOP1)) Rabbit mAb (A12409) at 1 : 1000 dilution. Secondary antibody: HRP-conjugated Goat anti-Rabbit IgG (H+L) (AS014) at 1:10000 dilution. Lysates/proteins: 25µg per lane. Blocking buffer: 3% nonfat dry milk in TBST. Detection: ECL Basic Kit (RM00020). Exposure time: 1s.



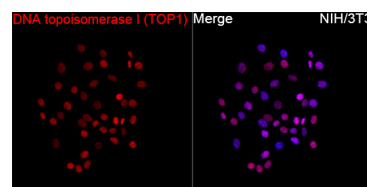
Western blot analysis of lysates from Mouse thymus, using DNA topoisomerase I (DNA topoisomerase I (TOP1)) Rabbit mAb (A12409) at 1 : 1000 dilution. Secondary antibody: HRP-conjugated Goat anti-Rabbit IgG (H+L) (AS014) at 1:10000 dilution. Lysates/proteins: 25µg per lane. Blocking buffer: 3% nonfat dry milk in TBST. Detection: ECL Basic Kit (RM00020). Exposure time: 5s.



Immunohistochemistry analysis of paraffin-embedded Human thyroid cancer using DNA topoisomerase I (DNA topoisomerase I (TOP1)) Rabbit mAb (A12409) at dilution of 1:100 (40x lens). Microwave antigen retrieval performed with 0.01M PBS Buffer (pH 7.2) prior to IHC staining.

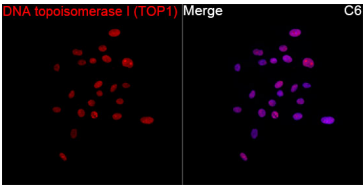


Confocal imaging of U-2 OS cells using DNA topoisomerase I (TOP1) Rabbit mAb (A12409), dilution 1:100 (Red). The cells were counterstained with α-Tubulin Mouse mAb (AC012, dilution 1:400) (Green). DAPI was used for nuclear staining (blue). Objective: 100x.

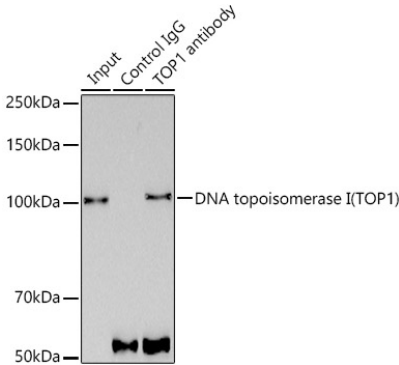


Immunofluorescence analysis of NIH/3T3 cells using DNA topoisomerase I (TOP1) Rabbit mAb (A12409) at a dilution of 1:100 (40x lens). Secondary antibody: Cy3-conjugated Goat anti-Rabbit IgG (H+L) (AS007) at 1:500 dilution. Blue: DAPI for nuclear staining.

Validation Data



Immunofluorescence analysis of C6 cells using DNA topoisomerase I (TOP1) Rabbit mAb (A12409) at a dilution of 1:100 (40x lens).
Secondary antibody: Cy3-conjugated Goat anti-Rabbit IgG (H+L)(AS007) at 1:500 dilution. Blue: DAPI for nuclear staining.



Immunoprecipitation analysis of 300 µg extracts of MCF7 cells using 3 µg DNA topoisomerase I (TOP1) antibody (A12409). Western blot was performed from the immunoprecipitate using DNA topoisomerase I (TOP1) antibody (A12409) at a dilution of 1:1000.