

A12396

Leader in Biomolecular Solutions for Life Science



# Alkaline Phosphatase (ALPL) Rabbit pAb

Catalog No.: A12396

1 Publications

## Basic Information

**Observed MW**

80kDa

**Calculated MW**

57kDa

**Category**

Polyclonal Antibody

**Applications**

WB,IHC-P,ELISA

**Cross-Reactivity**

Human,Mouse,Rat

## Background

This gene encodes a member of the alkaline phosphatase family of proteins. There are at least four distinct but related alkaline phosphatases: intestinal, placental, placental-like, and liver/bone/kidney (tissue non-specific). The first three are located together on chromosome 2, while the tissue non-specific form is located on chromosome 1. The product of this gene is a membrane bound glycosylated enzyme that is not expressed in any particular tissue and is, therefore, referred to as the tissue-nonspecific form of the enzyme. Alternative splicing results in multiple transcript variants, at least one of which encodes a preproprotein that is proteolytically processed to generate the mature enzyme. This enzyme may play a role in bone mineralization. Mutations in this gene have been linked to hypophosphatasia, a disorder that is characterized by hypercalcemia and skeletal defects.

## Recommended Dilutions

WB 1:500 - 1:1000

IHC-P 1:50 - 1:200

**ELISA** Recommended starting concentration is 1 µg/mL. Please optimize the concentration based on your specific assay requirements.

## Immunogen Information

**Gene ID**

249

**Swiss Prot**

P05186

**Immunogen**

Recombinant fusion protein containing a sequence corresponding to amino acids 230-440 of human Alkaline Phosphatase (ALPL) (NP\_000469.3).

**Synonyms**

HOPS; HPPA; HPPC; HPPI; HPPO; TNAP; TNALP; APTNAP; TNSALP; AP-TNAP; TNS-ALP; Alkaline Phosphatase (ALPL)

## Contact

[www.abclonal.com](http://www.abclonal.com)

## Product Information

**Source**

Rabbit

**Isotype**

IgG

**Purification**

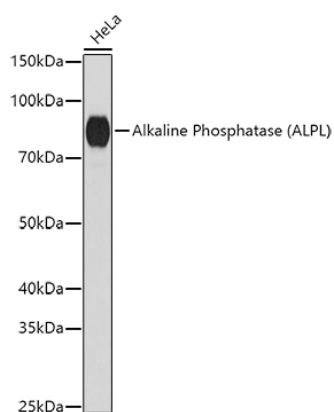
Affinity purification

**Storage**

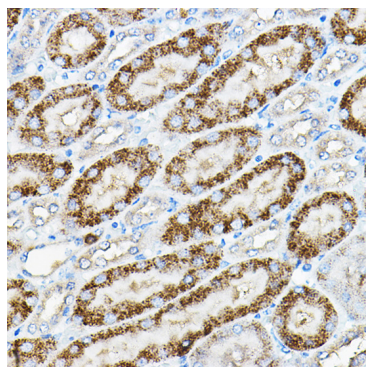
Store at -20°C. Avoid freeze / thaw cycles.

Buffer: PBS with 0.09% Sodium azide, 50% glycerol, pH7.3.

## Validation Data



Western blot analysis of lysates from HeLa cells, using Alkaline Phosphatase (ALPL) Rabbit pAb (A12396) at 1:1000 dilution.  
Secondary antibody: HRP-conjugated Goat anti-Rabbit IgG (H+L) (AS014) at 1:10000 dilution.  
Lysates/proteins: 25µg per lane.  
Blocking buffer: 3% nonfat dry milk in TBST.  
Detection: ECL Basic Kit (RM00020).  
Exposure time: 180s.



Immunohistochemistry analysis of paraffin-embedded Mouse kidney using Alkaline Phosphatase (Alkaline Phosphatase (ALPL)) Rabbit pAb (A12396) at dilution of 1:200 (40x lens). High pressure antigen retrieval performed with 0.01M Citrate buffer (pH 6.0) prior to IHC staining.