

A12394

Leader in Biomolecular Solutions for Life Science



# CAPNS2 Rabbit pAb

Catalog No.: A12394

## Basic Information

---

### Observed MW

32kDa

### Calculated MW

28kDa

### Category

Polyclonal Antibody

### Applications

WB,ELISA

### Cross-Reactivity

Mouse

## Background

---

Enables calcium-dependent cysteine-type endopeptidase activity. Predicted to be involved in proteolysis. Predicted to be located in cytosol and plasma membrane.

## Recommended Dilutions

---

**WB** 1:200 - 1:500

**ELISA** Recommended starting concentration is 1 µg/mL. Please optimize the concentration based on your specific assay requirements.

## Immunogen Information

---

### Gene ID

84290

### Swiss Prot

Q96L46

### Immunogen

Recombinant fusion protein containing a sequence corresponding to amino acids 1-100 of human CAPNS2 (NP\_115706.1).

### Synonyms

CSS2; CAPNS2

## Contact

---

 [www.abclonal.com](http://www.abclonal.com)

## Product Information

---

### Source

Rabbit

### Isotype

IgG

### Purification

Affinity purification

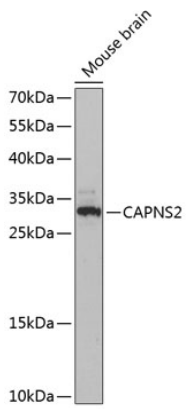
### Storage

Store at -20°C. Avoid freeze / thaw cycles.

Buffer: PBS with 0.01% thimerosal, 50% glycerol, pH7.3.

## Validation Data

---



Western blot analysis of lysates from mouse brain, using CAPNS2 Rabbit pAb (A12394) at 1:3000 dilution.

Secondary antibody: HRP-conjugated Goat anti-Rabbit IgG (H+L) (AS014) at 1:10000 dilution.

Lysates/proteins: 25 $\mu$ g per lane.

Blocking buffer: 3% nonfat dry milk in TBST.

Detection: ECL Basic Kit (RM00020).

Exposure time: 90s.