

A12385

Leader in Biomolecular Solutions for Life Science



MEF2C Rabbit pAb

Catalog No.: A12385

7 Publications

Basic Information

Observed MW

45kDa

Calculated MW

51kDa

Category

Polyclonal Antibody

Applications

WB,IHC-P,IF/ICC,ELISA

Cross-Reactivity

Human,Mouse,Rat

Background

This locus encodes a member of the MADS box transcription enhancer factor 2 (MEF2) family of proteins, which play a role in myogenesis. The encoded protein, MEF2 polypeptide C, has both trans-activating and DNA binding activities. This protein may play a role in maintaining the differentiated state of muscle cells. Mutations and deletions at this locus have been associated with severe cognitive disability, stereotypic movements, epilepsy, and cerebral malformation. Alternatively spliced transcript variants have been described.

Recommended Dilutions

WB 1:500 - 1:2000

IHC-P 1:50 - 1:100

IF/ICC 1:50 - 1:100

ELISA Recommended starting concentration is 1 µg/mL. Please optimize the concentration based on your specific assay requirements.

Immunogen Information

Gene ID

4208

Swiss Prot

Q06413

Immunogen

Recombinant fusion protein containing a sequence corresponding to amino acids 170-380 of human MEF2C (NP_002388.2).

Synonyms

NEDHSIL; DEL5q14.3; C5DELq14.3; MEF2C

Product Information

Source

Rabbit

Isotype

IgG

Purification

Affinity purification

Storage

Store at -20°C. Avoid freeze / thaw cycles.

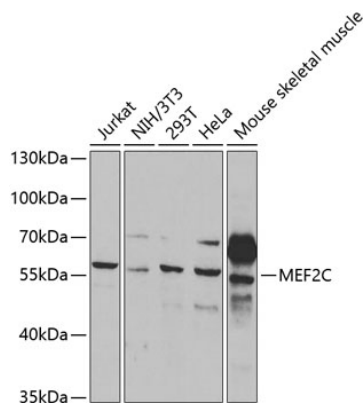
Buffer: PBS with 0.02% sodium azide,50% glycerol,pH7.3.

Contact

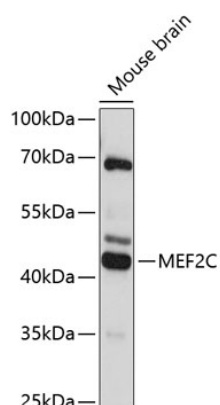


www.abclonal.com

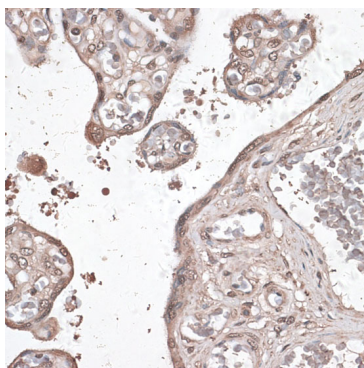
Validation Data



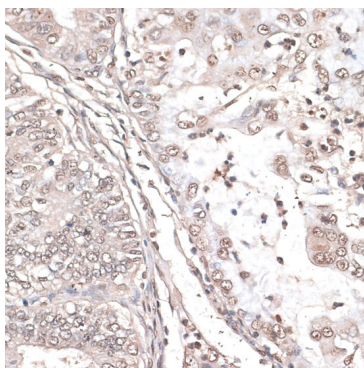
Western blot analysis of various lysates using MEF2C Rabbit pAb (A12385) at 1:1000 dilution.
 Secondary antibody: HRP-conjugated Goat anti-Rabbit IgG (H+L) (AS014) at 1:10000 dilution.
 Lysates/proteins: 25µg per lane.
 Blocking buffer: 3% nonfat dry milk in TBST.



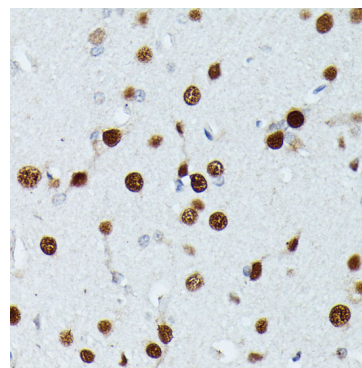
Western blot analysis of lysates from mouse brain, using MEF2C Rabbit pAb (A12385) at 1:3000 dilution.
 Secondary antibody: HRP-conjugated Goat anti-Rabbit IgG (H+L) (AS014) at 1:10000 dilution.
 Lysates/proteins: 25µg per lane.
 Blocking buffer: 3% nonfat dry milk in TBST.
 Detection: ECL Basic Kit (RM00020).
 Exposure time: 90s.



Immunohistochemistry analysis of paraffin-embedded Human placenta using MEF2C Rabbit pAb (A12385) at dilution of 1:100 (40x lens).
 Microwave antigen retrieval performed with 0.01M PBS Buffer (pH 7.2) prior to IHC staining.

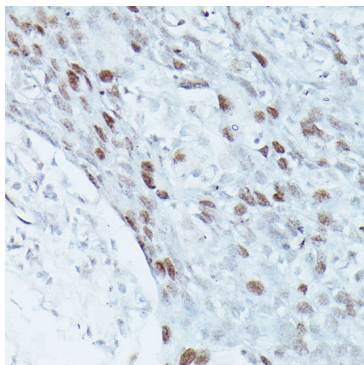


Immunohistochemistry analysis of paraffin-embedded Human endometrium cancer using MEF2C Rabbit pAb (A12385) at dilution of 1:100 (40x lens).
 Microwave antigen retrieval performed with 0.01M PBS Buffer (pH 7.2) prior to IHC staining.

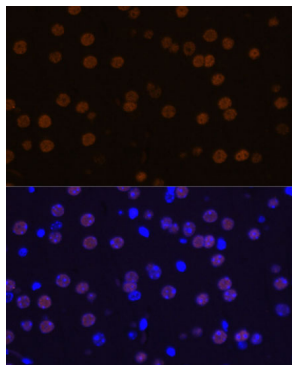


Immunohistochemistry analysis of paraffin-embedded Rat brain using MEF2C Rabbit pAb (A12385) at dilution of 1:100 (40x lens).
 Microwave antigen retrieval performed with 0.01M PBS Buffer (pH 7.2) prior to IHC staining.

Validation Data



Immunohistochemistry analysis of paraffin-embedded Human breast cancer using MEF2C Rabbit pAb (A12385) at dilution of 1:100 (40x lens). Microwave antigen retrieval performed with 0.01M PBS Buffer (pH 7.2) prior to IHC staining.



Immunofluorescence analysis of paraffin-embedded mouse brain using MEF2C Rabbit pAb (A12385) at dilution of 1:100 (40x lens). Secondary antibody: Cy3-conjugated Goat anti-Rabbit IgG (H+L) (AS007) at 1:500 dilution. Blue: DAPI for nuclear staining.