

A12346

Leader in Biomolecular Solutions for Life Science



SH3BGRL Rabbit pAb

Catalog No.: A12346

Basic Information

Observed MW

13kDa

Calculated MW

13kDa

Category

Polyclonal Antibody

Applications

WB

Cross-Reactivity

Human

Background

Predicted to enable SH3 domain binding activity. Located in extracellular exosome.

Recommended Dilutions

WB 1:500 - 1:1000

Immunogen Information

Gene ID

6451

Swiss Prot

O75368

Immunogen

A synthetic peptide of human SH3BGRL

Synonyms

SH3BGR; HEL-S-115; SH3BGRL

Contact

 www.abclonal.com

Product Information

Source

Rabbit

Isotype

IgG

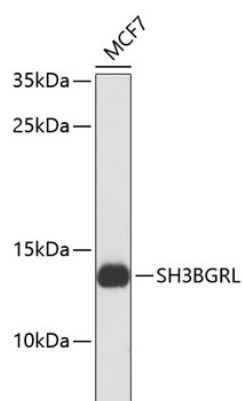
Purification

Affinity purification

Storage

Store at 4°C. Avoid freeze / thaw cycles.
Buffer: PBS with 0.02% sodium azide, pH7.3.

Validation Data



Western blot analysis of extracts of MCF-7 cells, using SH3BGRL antibody (A12346).
Secondary antibody: HRP Goat Anti-Rabbit IgG (H+L) (AS014) at 1:10000 dilution.
Lysates/proteins: 25µg per lane.
Blocking buffer: 3% nonfat dry milk in TBST.