

A12342

Leader in Biomolecular Solutions for Life Science



NSD3/WHSC1L1 Rabbit mAb

Catalog No.: A12342

Recombinant

Basic Information

Observed MW

80-100kDa/200kDa

Calculated MW

162kDa

Category

SMab Recombinant Monoclonal
Antibody

Applications

WB, ELISA

Cross-Reactivity

Human, Mouse, Rat

CloneNo number

ARC0707

Background

This gene is related to the Wolf-Hirschhorn syndrome candidate-1 gene and encodes a protein with PWWP (proline-tryptophan-tryptophan-proline) domains. This protein methylates histone H3 at lysine residues 4 and 27, which represses gene transcription. Two alternatively spliced variants have been described.

Recommended Dilutions

WB 1:500 - 1:1000

ELISA Recommended starting concentration is 1 µg/mL. Please optimize the concentration based on your specific assay requirements.

Immunogen Information

Gene ID

54904

Swiss Prot

Q9BZ95

Immunogen

A synthetic peptide corresponding to a sequence within amino acids 1-100 of human NSD3/WHSC1L1 (Q9BZ95).

Synonyms

KMT3F; KMT3G; WHISTLE; WHSC1L1; pp14328; NSD3/WHSC1L1

Contact



www.abclonal.com

Product Information

Source

Rabbit

Isotype

IgG

Purification

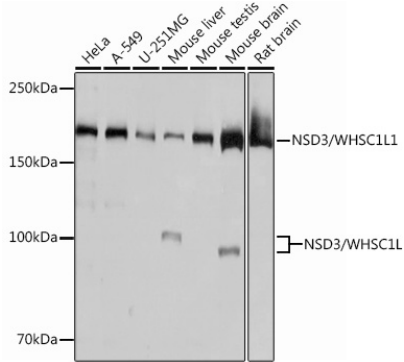
Affinity purification

Storage

Store at -20°C. Avoid freeze / thaw cycles.

Buffer: PBS with 0.02% sodium azide, 0.05% BSA, 50% glycerol, pH 7.3.

Validation Data



Western blot analysis of various lysates using NSD3/WHSC1L1 Rabbit mAb (A12342) at 1 : 1000 dilution.
Secondary antibody: HRP-conjugated Goat anti-Rabbit IgG (H+L) (AS014) at 1:10000 dilution.
Lysates/proteins: 25µg per lane.
Blocking buffer: 3% nonfat dry milk in TBST.
Detection: ECL Basic Kit (RM00020).
Exposure time: 3s.