

A12290

Leader in Biomolecular Solutions for Life Science



ENPP6 Rabbit pAb

Catalog No.: A12290

Basic Information

Observed MW

50kDa

Calculated MW

50kDa

Category

Polyclonal Antibody

Applications

WB,ELISA

Cross-Reactivity

Human,Mouse

Background

Enables glycerophosphocholine cholinephosphodiesterase activity. Involved in choline metabolic process and lipid metabolic process. Located in extracellular region and plasma membrane.

Recommended Dilutions

WB 1:500 - 1:2000

ELISA Recommended starting concentration is 1 µg/mL. Please optimize the concentration based on your specific assay requirements.

Immunogen Information

Gene ID

133121

Swiss Prot

Q6UWR7

Immunogen

Recombinant fusion protein containing a sequence corresponding to amino acids 91-440 of human ENPP6 (NP_699174.1).

Synonyms

NPP6; ENPP6

Contact

 www.abclonal.com

Product Information

Source

Rabbit

Isotype

IgG

Purification

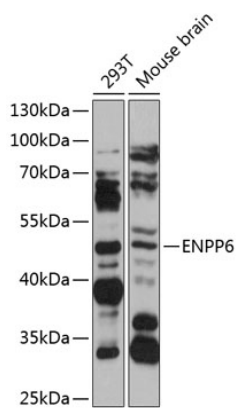
Affinity purification

Storage

Store at -20°C. Avoid freeze / thaw cycles.

Buffer: PBS with 0.01% thimerosal, 50% glycerol, pH7.3.

Validation Data



Western blot analysis of various lysates using ENPP6 Rabbit pAb (A12290) at 1:1000 dilution.

Secondary antibody: HRP-conjugated Goat anti-Rabbit IgG (H+L) (AS014) at 1:10000 dilution.

Lysates/proteins: 25µg per lane.

Blocking buffer: 3% nonfat dry milk in TBST.

Detection: ECL Basic Kit (RM00020).

Exposure time: 30s.