

A12200

Leader in Biomolecular Solutions for Life Science



## Cathepsin L/V/K/H Rabbit pAb

Catalog No.: A12200

1 Publications

### Basic Information

#### Observed MW

38kDa

#### Calculated MW

38kDa

#### Category

Polyclonal Antibody

#### Applications

WB, ELISA

#### Cross-Reactivity

Human, Rat

### Background

The protein encoded by this gene is a lysosomal cysteine proteinase that plays a major role in intracellular protein catabolism. Its substrates include collagen and elastin, as well as alpha-1 protease inhibitor, a major controlling element of neutrophil elastase activity. The encoded protein has been implicated in several pathologic processes, including myofibril necrosis in myopathies and in myocardial ischemia, and in the renal tubular response to proteinuria. This protein, which is a member of the peptidase C1 family, is a dimer composed of disulfide-linked heavy and light chains, both produced from a single protein precursor. Additionally, this protein cleaves the S1 subunit of the SARS-CoV-2 spike protein, which is necessary for entry of the virus into the cell.

### Recommended Dilutions

WB 1:1000 - 1:5000

### Immunogen Information

#### Gene ID

1514

#### Swiss Prot

P07711

#### Immunogen

Recombinant fusion protein containing a sequence corresponding to amino acids 114-333 of human Cathepsin L/V/K/H (NP\_001903.1).

#### Synonyms

MEP; CATL; CTSL1; Cathepsin L/V/K/H

### Contact



[www.abclonal.com](http://www.abclonal.com)

### Product Information

#### Source

Rabbit

#### Isotype

IgG

#### Purification

Affinity purification

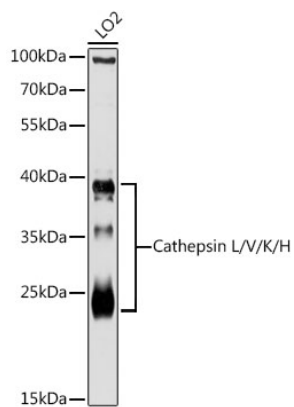
#### Storage

Store at -20°C. Avoid freeze / thaw cycles.

Buffer: PBS with 0.01% thimerosal, 50% glycerol, pH 7.3.

## Validation Data

---



Western blot analysis of lysates from LO2 cells, using Cathepsin L/V/K/H Rabbit pAb (A12200) at 1:3000 dilution.

Secondary antibody: HRP Goat Anti-Rabbit IgG (H+L) (AS014) at 1:10000 dilution.

Lysates/proteins: 25µg per lane.

Blocking buffer: 3% nonfat dry milk in TBST.

Detection: ECL Basic Kit (RM00020).

Exposure time: 30s.