

A12169

Leader in Biomolecular Solutions for Life Science



# OSTF1 Rabbit pAb

Catalog No.: A12169

## Basic Information

### Observed MW

26kDa

### Calculated MW

24kDa

### Category

Polyclonal Antibody

### Applications

WB,ELISA

### Cross-Reactivity

Human,Mouse,Rat

## Background

Osteoclast-stimulating factor-1 is an intracellular protein produced by osteoclasts that indirectly induces osteoclast formation and bone resorption (Reddy et al., 1998 [PubMed 10092216]).

## Recommended Dilutions

**WB** 1:500 - 1:1000

**ELISA** Recommended starting concentration is 1 µg/mL. Please optimize the concentration based on your specific assay requirements.

## Immunogen Information

### Gene ID

26578

### Swiss Prot

Q92882

### Immunogen

Recombinant fusion protein containing a sequence corresponding to amino acids 15-214 of human OSTF1 (NP\_036515.4).

### Synonyms

OSF; SH3P2; bA235O14.1; OSTF1

## Contact

 [www.abclonal.com](http://www.abclonal.com)

## Product Information

### Source

Rabbit

### Isotype

IgG

### Purification

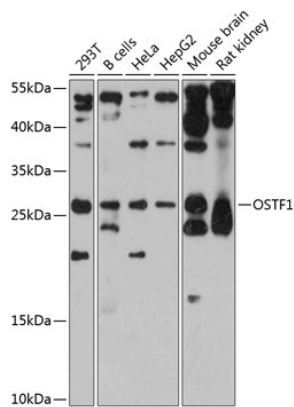
Affinity purification

### Storage

Store at -20°C. Avoid freeze / thaw cycles.

Buffer: PBS with 0.02% sodium azide,50% glycerol,pH7.3.

# Validation Data



Western blot analysis of various lysates using OSTF1 Rabbit pAb (A12169) at 1:3000 dilution.  
Secondary antibody: HRP-conjugated Goat anti-Rabbit IgG (H+L) (AS014) at 1:10000 dilution.  
Lysates/proteins: 25µg per lane.  
Blocking buffer: 3% nonfat dry milk in TBST.  
Detection: ECL Enhanced Kit (RM00021).  
Exposure time: 30s.