

A12162

Leader in Biomolecular Solutions for Life Science



# SNRPF Rabbit pAb

Catalog No.: A12162

## Basic Information

### Observed MW

12kDa

### Calculated MW

10kDa

### Category

Polyclonal Antibody

### Applications

WB,IHC-P,ELISA

### Cross-Reactivity

Human,Mouse,Rat

## Background

Enables RNA binding activity. Involved in spliceosomal snRNP assembly. Located in cytosol and nucleus. Part of several cellular components, including methylosome; nucleus; and pICln-Sm protein complex. Biomarker of nasopharynx carcinoma.

## Recommended Dilutions

**WB** 1:500 - 1:2000

**IHC-P** 1:50 - 1:200

**ELISA** Recommended starting concentration is 1 µg/mL. Please optimize the concentration based on your specific assay requirements.

## Immunogen Information

### Gene ID

6636

### Swiss Prot

P62306

### Immunogen

Recombinant fusion protein containing a sequence corresponding to amino acids 1-86 of human SNRPF (NP\_003086.1).

### Synonyms

SMF; Sm-F; snRNP-F; SNRPF

## Contact



[www.abclonal.com](http://www.abclonal.com)

## Product Information

### Source

Rabbit

### Isotype

IgG

### Purification

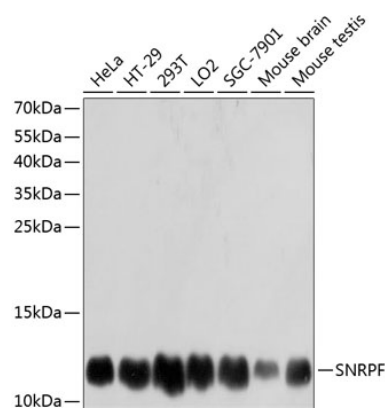
Affinity purification

### Storage

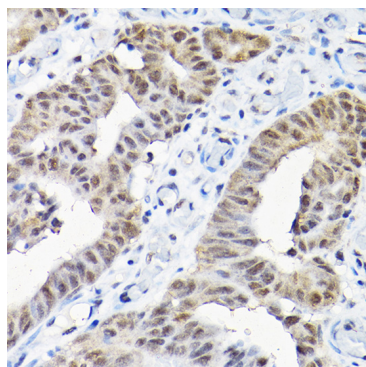
Store at -20°C. Avoid freeze / thaw cycles.

Buffer: PBS with 0.01% thimerosal, 50% glycerol, pH7.3.

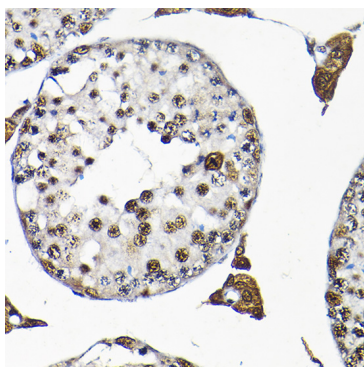
## Validation Data



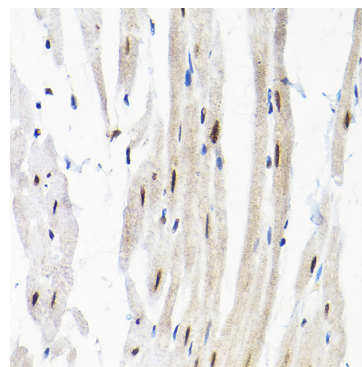
Western blot analysis of various lysates using SNRPF Rabbit pAb (A12162) at 1:3000 dilution.  
 Secondary antibody: HRP-conjugated Goat anti-Rabbit IgG (H+L) (AS014) at 1:10000 dilution.  
 Lysates/proteins: 25µg per lane.  
 Blocking buffer: 3% nonfat dry milk in TBST.  
 Detection: ECL Basic Kit (RM00020).  
 Exposure time: 1s.



Immunohistochemistry analysis of paraffin-embedded Human colon carcinoma using SNRPF Rabbit pAb (A12162) at dilution of 1:200 (40x lens). High pressure antigen retrieval performed with 0.01M Citrate Bufferr (pH 6.0) prior to IHC staining.



Immunohistochemistry analysis of paraffin-embedded Mouse testis using SNRPF Rabbit pAb (A12162) at dilution of 1:200 (40x lens). High pressure antigen retrieval performed with 0.01M Citrate Bufferr (pH 6.0) prior to IHC staining.



Immunohistochemistry analysis of paraffin-embedded Rat heart using SNRPF Rabbit pAb (A12162) at dilution of 1:200 (40x lens). High pressure antigen retrieval performed with 0.01M Citrate Bufferr (pH 6.0) prior to IHC staining.