

A12140

Leader in Biomolecular Solutions for Life Science



## TFCP2L1 Rabbit pAb

Catalog No.: A12140

### Basic Information

#### Observed MW

58kDa

#### Calculated MW

55kDa

#### Category

Polyclonal Antibody

#### Applications

WB, ELISA

#### Cross-Reactivity

Human

### Background

Enables RNA polymerase II cis-regulatory region sequence-specific DNA binding activity. Involved in regulation of transcription by RNA polymerase II. Predicted to be located in cytoplasm and membrane. Predicted to be part of chromatin. Predicted to be active in nucleus.

### Recommended Dilutions

**WB** 1:500 - 1:2000

**ELISA** Recommended starting concentration is 1 µg/mL. Please optimize the concentration based on your specific assay requirements.

### Immunogen Information

#### Gene ID

29842

#### Swiss Prot

Q9NZI6

#### Immunogen

Recombinant fusion protein containing a sequence corresponding to amino acids 360-430 of human TFCP2L1 (NP\_055368.1).

#### Synonyms

LBP9; CRTR1; LBP-9; TFCP2L1

### Contact



[www.abclonal.com](http://www.abclonal.com)

### Product Information

#### Source

Rabbit

#### Isotype

IgG

#### Purification

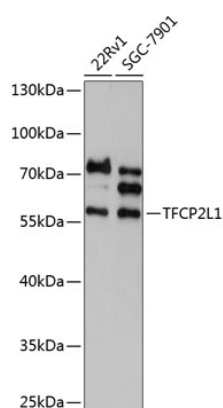
Affinity purification

#### Storage

Store at -20°C. Avoid freeze / thaw cycles.

Buffer: PBS with 0.01% thimerosal, 50% glycerol, pH7.3.

## Validation Data



Western blot analysis of various lysates using TFCP2L1 Rabbit pAb (A12140) at 1:1000 dilution.

Secondary antibody: HRP-conjugated Goat anti-Rabbit IgG (H+L) (AS014) at 1:10000 dilution.

Lysates/proteins: 25µg per lane.

Blocking buffer: 3% nonfat dry milk in TBST.

Detection: ECL Basic Kit (RM00020).

Exposure time: 90s.