

A12139

Leader in Biomolecular Solutions for Life Science



# SYCP1 Rabbit pAb

Catalog No.: A12139

2 Publications

## Basic Information

### Observed MW

120kDa

### Calculated MW

114kDa

### Category

Polyclonal Antibody

### Applications

WB,ELISA

### Cross-Reactivity

Mouse

## Background

Enables double-stranded DNA binding activity. Involved in protein homotetramerization. Predicted to be located in synaptonemal complex. Predicted to be active in central element; male germ cell nucleus; and transverse filament.

## Recommended Dilutions

**WB** 1:500 - 1:2000

**ELISA** Recommended starting concentration is 1 µg/mL. Please optimize the concentration based on your specific assay requirements.

## Immunogen Information

### Gene ID

6847

### Swiss Prot

Q15431

### Immunogen

Recombinant fusion protein containing a sequence corresponding to amino acids 100-400 of human SYCP1 (NP\_003167.2).

### Synonyms

CT8; SCP1; SCP-1; HOM-TES-14; SYCP1

## Contact



[www.abclonal.com](http://www.abclonal.com)

## Product Information

### Source

Rabbit

### Isotype

IgG

### Purification

Affinity purification

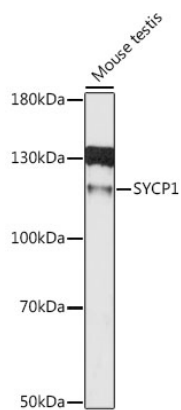
### Storage

Store at -20°C. Avoid freeze / thaw cycles.

Buffer: PBS with 0.01% thimerosal, 50% glycerol, pH7.3.

## Validation Data

---



Western blot analysis of lysates from mouse testis, using SYCP1 Rabbit pAb (A12139) at 1:1000 dilution.

Secondary antibody: HRP-conjugated Goat anti-Rabbit IgG (H+L) (AS014) at 1:10000 dilution.

Lysates/proteins: 25µg per lane.

Blocking buffer: 3% nonfat dry milk in TBST.

Detection: ECL Basic Kit (RM00020).

Exposure time: 90s.