

A12132

Leader in Biomolecular Solutions for Life Science



NLRP11 Rabbit pAb

Catalog No.: A12132 **1 Publications**

Basic Information

Observed MW

110kDa

Calculated MW

118kDa

Category

Polyclonal Antibody

Applications

WB,ELISA

Cross-Reactivity

Human

Background

This gene is a member of the the NOD-like receptor protein (NLRP) gene family and encodes a protein with an N-terminal pyrin death (PYD) domain and nucleoside triphosphate hydrolase (NACHT) domain and a C-terminal leucine-rich repeats (LRR) region. This gene has been shown to regulate caspases in the proinflammatory signal transduction pathway and, based on studies of other members of the NLRP gene family with similar domain structure, is predicted to form part of the multiprotein inflammasome complex. Alternative splicing produces multiple transcript variants encoding distince isoforms.

Recommended Dilutions

WB 1:500 - 1:2000

ELISA Recommended starting concentration is 1 µg/mL. Please optimize the concentration based on your specific assay requirements.

Immunogen Information

Gene ID

204801

Swiss Prot

P59045

Immunogen

Recombinant protein (or fragment).This information is considered to be commercially sensitive.

Synonyms

NOD17; PAN10; NALP11; PYPAF6; PYPAF7; CLR19.6; NLRP11

Contact

 www.abclonal.com

Product Information

Source

Rabbit

Isotype

IgG

Purification

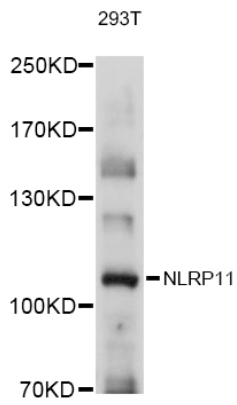
Affinity purification

Storage

Store at -20°C. Avoid freeze / thaw cycles.

Buffer: PBS with 0.01% thimerosal,50% glycerol,pH7.3.

Validation Data



Western blot analysis of lysates from 293T cells, using NLRP11 Rabbit pAb (A12132) at 1:1000 dilution.

Secondary antibody: HRP-conjugated Goat anti-Rabbit IgG (H+L) (AS014) at 1:10000 dilution.

Lysates/proteins: 25µg per lane.

Blocking buffer: 3% nonfat dry milk in TBST.

Detection: ECL Basic Kit (RM00020).

Exposure time: 1s.