

A12129

Leader in Biomolecular Solutions for Life Science



DESI2 Rabbit pAb

Catalog No.: A12129

Basic Information

Observed MW

21kDa

Calculated MW

21kDa

Category

Polyclonal Antibody

Applications

WB, ELISA

Cross-Reactivity

Human

Background

Enables Lys48-specific deubiquitinase activity; Lys63-specific deubiquitinase activity; and thiol-dependent deubiquitinase. Predicted to be involved in protein deubiquitination. Predicted to be located in cytoplasm.

Recommended Dilutions

WB 1:500 - 1:2000

ELISA Recommended starting concentration is 1 µg/mL. Please optimize the concentration based on your specific assay requirements.

Immunogen Information

Gene ID

51029

Swiss Prot

Q9BSY9

Immunogen

Recombinant fusion protein containing a sequence corresponding to amino acids 1-194 of human DESI2 (NP_057160.2).

Synonyms

DESI; DESI1; DeSI-2; PNAS-4; PPPDE1; CGI-146; FAM152A; C1orf121; DESI2

Contact



www.abclonal.com

Product Information

Source

Rabbit

Isotype

IgG

Purification

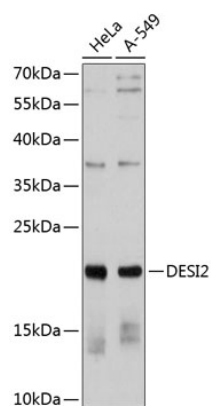
Affinity purification

Storage

Store at -20°C. Avoid freeze / thaw cycles.

Buffer: PBS with 0.01% thimerosal, 50% glycerol, pH 7.3.

Validation Data



Western blot analysis of various lysates using DESI2 Rabbit pAb (A12129) at 1:1000 dilution.

Secondary antibody: HRP-conjugated Goat anti-Rabbit IgG (H+L) (AS014) at 1:10000 dilution.

Lysates/proteins: 25µg per lane.

Blocking buffer: 3% nonfat dry milk in TBST.

Detection: ECL Basic Kit (RM00020).

Exposure time: 90s.