

A12107

Leader in Biomolecular Solutions for Life Science



TATDN1 Rabbit pAb

Catalog No.: A12107

Basic Information

Observed MW

34kDa

Calculated MW

34kDa

Category

Polyclonal Antibody

Applications

WB, ELISA

Cross-Reactivity

Human

Background

Predicted to enable 3'-5'-exodeoxyribonuclease activity. Predicted to be involved in DNA metabolic process and nucleic acid phosphodiester bond hydrolysis. Located in nucleoplasm.

Recommended Dilutions

WB 1:500 - 1:2000

Immunogen Information

Gene ID

83940

Swiss Prot

Q6P1N9

Immunogen

Recombinant fusion protein containing a sequence corresponding to amino acids 1-297 of human TATDN1 (NP_114415.1).

Synonyms

CDA11; TATDN1

Contact



www.abclonal.com

Product Information

Source

Rabbit

Isotype

IgG

Purification

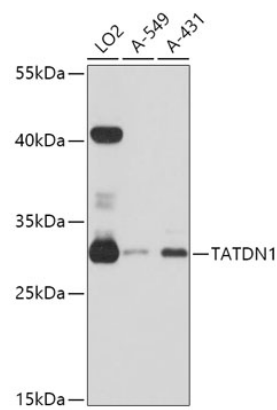
Affinity purification

Storage

Store at -20°C. Avoid freeze / thaw cycles.

Buffer: PBS with 0.01% thimerosal, 50% glycerol, pH 7.3.

Validation Data



Western blot analysis of various lysates using TATDN1 Rabbit pAb (A12107) at 1:3000 dilution.
Secondary antibody: HRP Goat Anti-Rabbit IgG (H+L) (AS014) at 1:10000 dilution.
Lysates/proteins: 25μg per lane.
Blocking buffer: 3% nonfat dry milk in TBST.
Detection: ECL Basic Kit (RM00020).
Exposure time: 30s.