

A12105

Leader in Biomolecular Solutions for Life Science



www.abclonal.com

ID2 Rabbit pAb

Catalog No.: A12105

Basic Information

Observed MW

15kDa

Calculated MW

15kDa

Category

Polyclonal Antibody

Applications

WB,ELISA

Cross-Reactivity

Human

Background

Enables RNA polymerase II-specific DNA-binding transcription factor binding activity and transcription regulator inhibitor activity. Involved in several processes, including animal organ development; entrainment of circadian clock by photoperiod; and regulation of gene expression. Acts upstream of with a negative effect on regulation of neural precursor cell proliferation and regulation of neuron differentiation. Acts upstream of or within several processes, including animal organ development; negative regulation of cell differentiation; and positive regulation of cell differentiation. Located in cytoplasm; euchromatin; and nucleus. Part of protein-containing complex. Is expressed in several structures, including alimentary system; central nervous system; embryo mesenchyme; sensory organ; and urinary system. Orthologous to human ID2 (inhibitor of DNA binding 2).

Recommended Dilutions

WB 1:500 - 1:2000

ELISA Recommended starting concentration is 1 µg/mL. Please optimize the concentration based on your specific assay requirements.

Immunogen Information

Gene ID

15902

Swiss Prot

P41136

Immunogen

Recombinant protein (or fragment). This information is considered to be commercially sensitive.

Synonyms

Idb2; bHLHb26; ID2

Contact



www.abclonal.com

Product Information

Source

Rabbit

Isotype

IgG

Purification

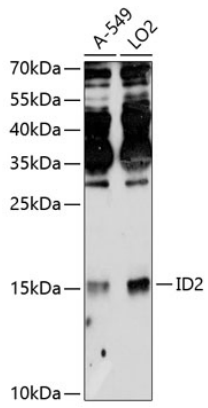
Affinity purification

Storage

Store at -20°C. Avoid freeze / thaw cycles.

Buffer: PBS with 0.01% thimerosal, 50% glycerol, pH7.3.

Validation Data



Western blot analysis of various lysates using ID2 Rabbit pAb (A12105) at 1:3000 dilution.

Secondary antibody: HRP-conjugated Goat anti-Rabbit IgG (H+L) (AS014) at 1:10000 dilution.

Lysates/proteins: 25µg per lane.

Blocking buffer: 3% nonfat dry milk in TBST.

Detection: ECL Enhanced Kit (RM00021).

Exposure time: 90s.