

A1208

Leader in Biomolecular Solutions for Life Science



# DEFB121 Rabbit pAb

Catalog No.: A1208

## Basic Information

---

### Observed MW

### Calculated MW

8kDa

### Category

Polyclonal Antibody

### Applications

IHC-P,ELISA,IF-P

### Cross-Reactivity

Human,Mouse,Rat

## Background

---

This gene encodes a member of the beta subfamily of defensins. Beta-defensins are antimicrobial peptides that protect tissues and organs from infection by a variety of microorganisms. This gene is found in a cluster with other beta-defensin genes on the long arm of chromosome 20. Two transcript variants encoding different isoforms have been found for this gene.

## Recommended Dilutions

---

IF-P 1:50 - 1:100

IHC-P 1:50 - 1:100

**ELISA** Recommended starting concentration is 1 µg/mL. Please optimize the concentration based on your specific assay requirements.

## Immunogen Information

---

### Gene ID

245934

### Swiss Prot

Q5J5C9

### Immunogen

Recombinant protein (or fragment). This information is considered to be commercially sensitive.

### Synonyms

DEFB21; ESC42RELC; DEFB121

## Contact

---

 [www.abclonal.com](http://www.abclonal.com)

## Product Information

---

### Source

Rabbit

### Isotype

IgG

### Purification

Affinity purification

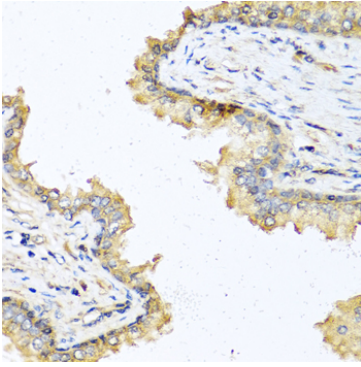
### Storage

Store at -20°C. Avoid freeze / thaw cycles.

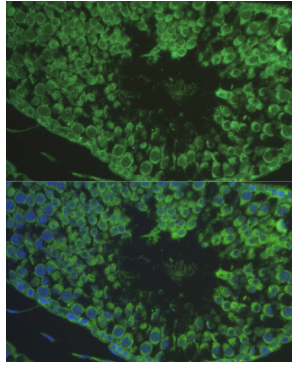
Buffer: PBS containing 50% glycerol, preserved with proclin300 or sodium azide (as specified on the Certificate of Analysis), pH 7.3.

## Validation Data

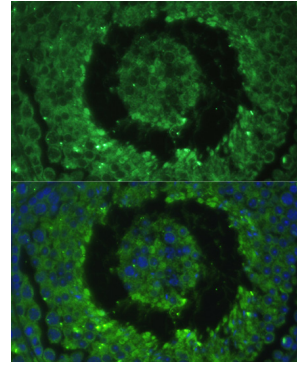
---



Immunohistochemistry analysis of paraffin-embedded Human prostate using DEFB121 Rabbit pAb (A1208) at dilution of 1:100 (40x lens). Microwave antigen retrieval performed with 0.01M PBS Buffer (pH 7.2) prior to IHC staining.



Immunofluorescence analysis of paraffin-embedded rat testis using DEFB121 Rabbit pAb (A1208) at dilution of 1:100. Secondary antibody: Cy3-conjugated Goat anti-Rabbit IgG (H+L) (AS007) at 1:500 dilution. Blue: DAPI for nuclear staining.



Immunofluorescence analysis of paraffin-embedded mouse testis using DEFB121 Rabbit pAb (A1208) at dilution of 1:100. Secondary antibody: Cy3-conjugated Goat anti-Rabbit IgG (H+L) (AS007) at 1:500 dilution. Blue: DAPI for nuclear staining.