

A12056

Leader in Biomolecular Solutions for Life Science



Zswim8 Rabbit pAb

Catalog No.: A12056

Basic Information

Observed MW

197kDa

Calculated MW

70kDa/88kDa/193kDa/196kDa/197kDa

Category

Polyclonal Antibody

Applications

WB,ELISA

Cross-Reactivity

Mouse

Background

Predicted to enable ubiquitin ligase-substrate adaptor activity. Involved in positive regulation of miRNA catabolic process. Located in cytosol. Part of cullin-RING ubiquitin ligase complex. Is expressed in central nervous system and retina. Orthologous to human ZSWIM8 (zinc finger SWIM-type containing 8).

Recommended Dilutions

WB 1:500 - 1:2000

Immunogen Information

Gene ID

268721

Swiss Prot

Immunogen

A synthetic peptide corresponding to a sequence within amino acids 1600-1700 of mouse Zswim8 (NP_082272.1).

Synonyms

Kiaa0913; mKIAA0913; 2310021P13Rik; 4832404P21Rik; Zswim8

Contact



www.abclonal.com

Product Information

Source

Rabbit

Isotype

IgG

Purification

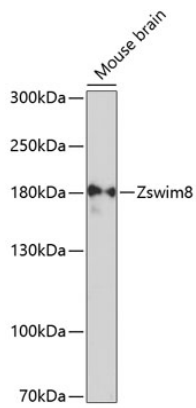
Affinity purification

Storage

Store at -20°C. Avoid freeze / thaw cycles.

Buffer: PBS with 0.02% sodium azide,50% glycerol,pH7.3.

Validation Data



Western blot analysis of lysates from mouse brain, using Zswim8 Rabbit pAb (A12056) at 1:3000 dilution.
Secondary antibody: HRP Goat Anti-Rabbit IgG (H+L) (AS014) at 1:10000 dilution.
Lysates/proteins: 25µg per lane.
Blocking buffer: 3% nonfat dry milk in TBST.
Detection: ECL Basic Kit (RM00020).
Exposure time: 90s.