

A12050

Leader in Biomolecular Solutions for Life Science



## ANO6 Rabbit pAb

Catalog No.: A12050

### Basic Information

---

**Observed MW**

110kDa

**Calculated MW**

106kDa

**Category**

Polyclonal Antibody

**Applications**

WB,ELISA

**Cross-Reactivity**

Human,Mouse,Rat

### Background

---

This gene encodes a multi-pass transmembrane protein that belongs to the anoctamin family. This protein is an essential component for the calcium-dependent exposure of phosphatidylserine on the cell surface. The scrambling of phospholipid occurs in various biological systems, such as when blood platelets are activated, they expose phosphatidylserine to trigger the clotting system. Mutations in this gene are associated with Scott syndrome. Alternatively spliced transcript variants encoding different isoforms have been found for this gene.

### Recommended Dilutions

---

WB 1:500 - 1:2000

### Immunogen Information

---

**Gene ID**

196527

**Swiss Prot**

Q4KMQ2

**Immunogen**

Recombinant fusion protein containing a sequence corresponding to amino acids 750-830 of human ANO6 (NP\_001020527.2).

**Synonyms**

SCTS; BDPLT7; TMEM16F; ANO6

### Contact

---



[www.abclonal.com](http://www.abclonal.com)

### Product Information

---

**Source**

Rabbit

**Isotype**

IgG

**Purification**

Affinity purification

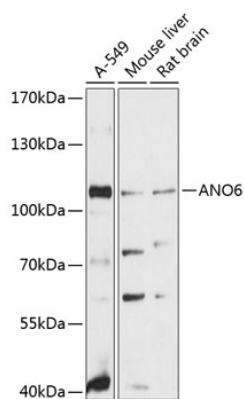
**Storage**

Store at -20°C. Avoid freeze / thaw cycles.

Buffer: PBS with 0.01% thimerosal,50% glycerol,pH7.3.

## Validation Data

---



Western blot analysis of various lysates using ANO6 Rabbit pAb (A12050) at 1:3000 dilution.  
Secondary antibody: HRP Goat Anti-Rabbit IgG (H+L) (AS014) at 1:10000 dilution.  
Lysates/proteins: 25µg per lane.  
Blocking buffer: 3% nonfat dry milk in TBST.  
Detection: ECL Basic Kit (RM00020).  
Exposure time: 90s.