

A1204

Leader in Biomolecular Solutions for Life Science



## LCN6 Rabbit pAb

Catalog No.: A1204

### Basic Information

#### Observed MW

18kDa

#### Calculated MW

18kDa

#### Category

Polyclonal Antibody

#### Applications

WB,ELISA

#### Cross-Reactivity

Mouse,Rat

### Background

Predicted to enable small molecule binding activity. Predicted to be involved in single fertilization. Predicted to be located in extracellular region.

### Recommended Dilutions

**WB** 1:500 - 1:2000

**ELISA** Recommended starting concentration is 1 µg/mL. Please optimize the concentration based on your specific assay requirements.

### Immunogen Information

#### Gene ID

158062

#### Swiss Prot

P62502

#### Immunogen

Recombinant fusion protein containing a sequence corresponding to amino acids 25-120 of human LCN6 (NP\_945184.1).

#### Synonyms

LCN5; hLcn5; UNQ643; LCN6

### Contact



[www.abclonal.com](http://www.abclonal.com)

### Product Information

#### Source

Rabbit

#### Isotype

IgG

#### Purification

Affinity purification

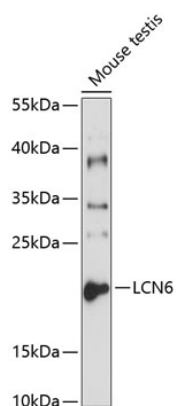
#### Storage

Store at -20°C. Avoid freeze / thaw cycles.

Buffer: PBS with 0.01% thimerosal, 50% glycerol, pH7.3.

## Validation Data

---



Western blot analysis of lysates from mouse testis, using LCN6 Rabbit pAb (A1204) at 1:1000 dilution.

Secondary antibody: HRP-conjugated Goat anti-Rabbit IgG (H+L) (AS014) at 1:10000 dilution.

Lysates/proteins: 25µg per lane.

Blocking buffer: 3% nonfat dry milk in TBST.

Detection: ECL Basic Kit (RM00020).

Exposure time: 5s.