

A11960

Leader in Biomolecular Solutions for Life Science



KDM3A Rabbit pAb

Catalog No.: A11960

2 Publications

Basic Information

Observed MW

147kDa

Calculated MW

147kDa

Category

Polyclonal Antibody

Applications

WB,IHC-P,IF/ICC,ELISA

Cross-Reactivity

Human

Background

Enables androgen receptor binding activity; histone H3-methyl-lysine-9 demethylase activity; and iron ion binding activity. Involved in several processes, including androgen receptor signaling pathway; formaldehyde biosynthetic process; and histone H3-K9 demethylation. Located in nucleoplasm. Implicated in cervical cancer and colon cancer. Biomarker of Ewing sarcoma; hepatocellular carcinoma; nasopharynx carcinoma; and prostate cancer.

Recommended Dilutions

WB 1:500 - 1:1000

IHC-P 1:50 - 1:200

IF/ICC 1:50 - 1:200

ELISA Recommended starting concentration is 1 µg/mL. Please optimize the concentration based on your specific assay requirements.

Immunogen Information

Gene ID

55818

Swiss Prot

Q9Y4C1

Immunogen

Synthetic peptide. This information is considered to be commercially sensitive.

Synonyms

TSGA; JMJD1; JHDM2A; JHMD2A; JMJD1A; KDM3A

Product Information

Source

Rabbit

Isotype

IgG

Purification

Affinity purification

Storage

Store at -20°C. Avoid freeze / thaw cycles.

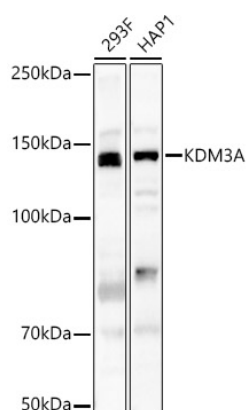
Buffer: PBS containing 50% glycerol, preserved with proclin300 or sodium azide (as specified on the Certificate of Analysis), pH 7.3.

Contact

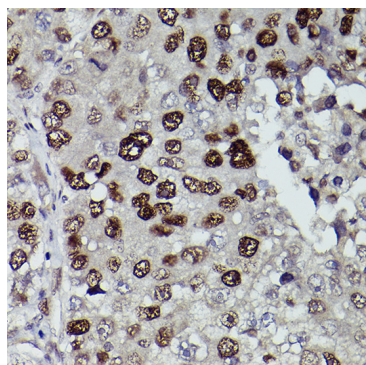


www.abclonal.com

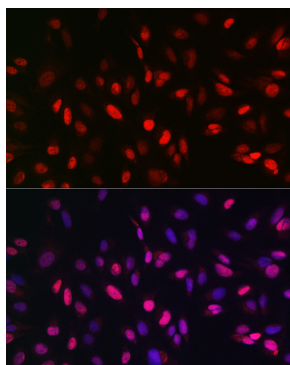
Validation Data



Western blot analysis of various lysates, using KDM3A Rabbit pAb (A11960) at 1:500 dilution.
Secondary antibody: HRP-conjugated Goat anti-Rabbit IgG (H+L) (AS014) at 1:10000 dilution.
Lysates/proteins: 25µg per lane.
Blocking buffer: 3% nonfat dry milk in TBST.
Detection: ECL Basic Kit (RM00020).
Exposure time: 90s.



Immunohistochemistry analysis of paraffin-embedded Human liver cancer using KDM3A Rabbit pAb (A11960) at dilution of 1:100 (40x lens). High pressure antigen retrieval performed with 0.01M Citrate buffer (pH 6.0) prior to IHC staining.



Immunofluorescence analysis of U2OS cells using KDM3A Rabbit pAb (A11960) at dilution of 1:100 (40x lens). Secondary antibody: Cy3-conjugated Goat anti-Rabbit IgG (H+L) (AS007) at 1:500 dilution. Blue: DAPI for nuclear staining.