

A11806

Leader in Biomolecular Solutions for Life Science



ERO1A Rabbit pAb

Catalog No.: A11806

Basic Information

Observed MW

65kDa

Calculated MW

54kDa

Category

Polyclonal Antibody

Applications

WB

Cross-Reactivity

Human

Background

Enables oxidoreductase activity. Involved in chaperone cofactor-dependent protein refolding. Located in endoplasmic reticulum.

Recommended Dilutions

WB 1:500 - 1:2000

Immunogen Information

Gene ID

30001

Swiss Prot

Q96HE7

Immunogen

Synthetic peptide. This information is considered to be commercially sensitive.

Synonyms

ERO1L; ERO1-L; ERO1LA; Ero1alpha; ERO1-alpha; ERO1-L-alpha; ERO1A

Contact



www.abclonal.com

Product Information

Source

Rabbit

Isotype

IgG

Purification

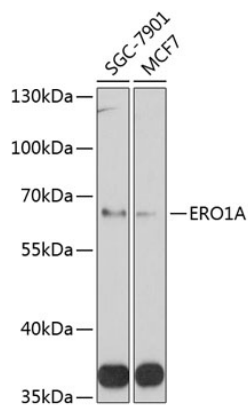
Affinity purification

Storage

Store at 4°C. Avoid freeze / thaw cycles.

Buffer: PBS with 0.02% sodium azide, pH7.3.

Validation Data



Western blot analysis of various lysates using ERO1A Rabbit pAb (A11806) at 1:1000 dilution.
Secondary antibody: HRP-conjugated Goat anti-Rabbit IgG (H+L) (AS014) at 1:10000 dilution.
Lysates/proteins: 25µg per lane.
Blocking buffer: 3% nonfat dry milk in TBST.
Detection: ECL Basic Kit (RM00020).
Exposure time: 90s.