

A1175

Leader in Biomolecular Solutions for Life Science



# FEN-1 Rabbit pAb

Catalog No.: A1175 **3 Publications**

## Basic Information

### Observed MW

48kDa

### Calculated MW

43kDa

### Category

Polyclonal Antibody

### Applications

WB,IHC-P,IF/ICC,IP,ELISA

### Cross-Reactivity

Human,Mouse

## Background

The protein encoded by this gene removes 5' overhanging flaps in DNA repair and processes the 5' ends of Okazaki fragments in lagging strand DNA synthesis. Direct physical interaction between this protein and AP endonuclease 1 during long-patch base excision repair provides coordinated loading of the proteins onto the substrate, thus passing the substrate from one enzyme to another. The protein is a member of the XPG/RAD2 endonuclease family and is one of ten proteins essential for cell-free DNA replication. DNA secondary structure can inhibit flap processing at certain trinucleotide repeats in a length-dependent manner by concealing the 5' end of the flap that is necessary for both binding and cleavage by the protein encoded by this gene. Therefore, secondary structure can deter the protective function of this protein, leading to site-specific trinucleotide expansions.

## Recommended Dilutions

|               |  |
|---------------|--|
| <b>WB</b>     | 1:500 - 1:2000   |
| <b>IHC-P</b>  | 1:50 - 1:200   |
| <b>IF/ICC</b> | 1:10 - 1:100   |
| <b>IP</b>     | 0.5µg-4µg antibody for<br>200µg-400µg extracts<br>of whole cells   |
| <b>ELISA</b>  | Recommended starting<br>concentration is 1<br>µg/mL. Please optimize<br>the concentration<br>based on your specific<br>assay requirements. |

## Immunogen Information

|                |                   |
|----------------|-------------------|
| <b>Gene ID</b> | <b>Swiss Prot</b> |
| 2237           | P39748            |

### Immunogen

Recombinant protein (or fragment). This information is considered to be commercially sensitive.

### Synonyms

MF1; RAD2; FEN-1

## Product Information

|               |                |                       |
|---------------|----------------|-----------------------|
| <b>Source</b> | <b>Isotype</b> | <b>Purification</b>   |
| Rabbit        | IgG            | Affinity purification |

### Storage

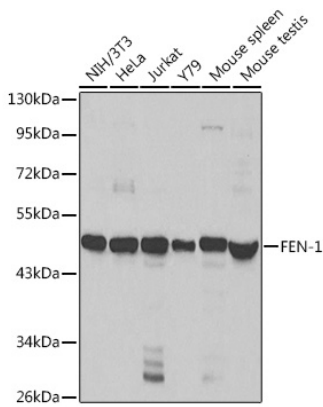
Store at -20°C. Avoid freeze / thaw cycles.

Buffer: PBS containing 50% glycerol, preserved with proclin300 or sodium azide (as specified on the Certificate of Analysis), pH 7.3.

## Contact

 [www.abclonal.com](http://www.abclonal.com)

## Validation Data

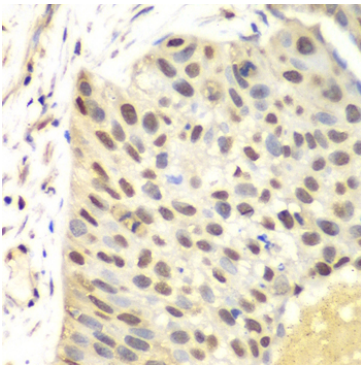


Western blot analysis of various lysates using FEN-1 Rabbit pAb (A1175) at 1:1000 dilution.

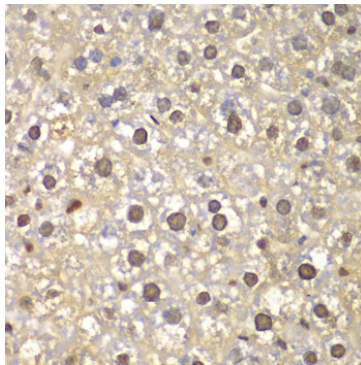
Secondary antibody: HRP-conjugated Goat anti-Rabbit IgG (H+L) (AS014) at 1:10000 dilution.

Lysates/proteins: 25µg per lane.

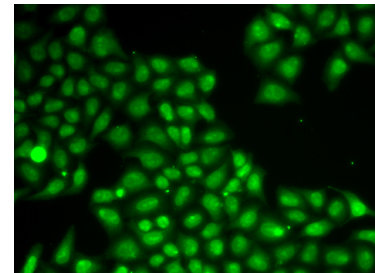
Blocking buffer: 3% nonfat dry milk in TBST.



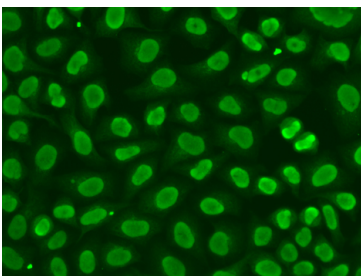
Immunohistochemistry analysis of paraffin-embedded Human lung cancer using FEN-1 Rabbit pAb (A1175) at dilution of 1:100 (40x lens). Microwave antigen retrieval performed with 0.01M PBS Buffer (pH 7.2) prior to IHC staining.



Immunohistochemistry analysis of paraffin-embedded Mouse liver using FEN-1 Rabbit pAb (A1175) at dilution of 1:100 (40x lens). Microwave antigen retrieval performed with 0.01M PBS Buffer (pH 7.2) prior to IHC staining.



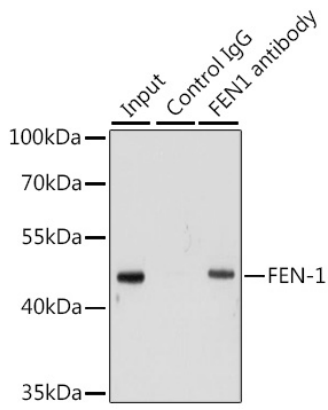
Immunofluorescence analysis of A549 cells using FEN-1 Rabbit pAb (A1175). Secondary antibody: Cy3-conjugated Goat anti-Rabbit IgG (H+L) (AS007) at 1:500 dilution.



Immunofluorescence analysis of HeLa cells using FEN-1 Rabbit pAb (A1175). Secondary antibody: Cy3-conjugated Goat anti-Rabbit IgG (H+L) (AS007) at 1:500 dilution.

## Validation Data

---



Immunoprecipitation analysis of 200  $\mu$ g extracts of HeLa cells using 1  $\mu$ g FEN-1 antibody (A1175). Western blot was performed from the immunoprecipitate using FEN-1 antibody (A1175) at a dilution of 1:1000.