

A11732

Leader in Biomolecular Solutions for Life Science



SERPINI2 Rabbit pAb

Catalog No.: A11732

Basic Information

Observed MW

46kDa

Calculated MW

46kDa

Category

Polyclonal Antibody

Applications

WB,ELISA,IF-P

Cross-Reactivity

Mouse,Rat

Background

The gene encodes a member of a family of proteins that acts as inhibitors of serine proteases. These proteins function in the regulation of a variety of physiological processes, including coagulation, fibrinolysis, development, malignancy, and inflammation. Expression of the encoded protein may be downregulated during pancreatic carcinogenesis. Alternative splicing results in multiple transcript variants for this gene.

Recommended Dilutions

WB 1:500 - 1:2000

IF-P 1:50 - 1:100

ELISA Recommended starting concentration is 1 µg/mL. Please optimize the concentration based on your specific assay requirements.

Immunogen Information

Gene ID

5276

Swiss Prot

O75830

Immunogen

Recombinant protein (or fragment). This information is considered to be commercially sensitive.

Synonyms

MEPI; PI14; PANCPIN; TSA2004; SERPINI2

Contact

 www.abclonal.com

Product Information

Source

Rabbit

Isotype

IgG

Purification

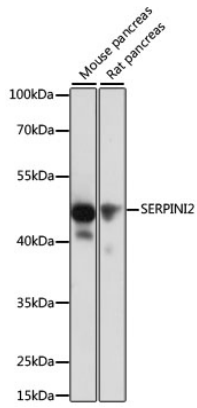
Affinity purification

Storage

Store at -20°C. Avoid freeze / thaw cycles.

Buffer: PBS with 0.01% thimerosal, 50% glycerol, pH7.3.

Validation Data



Western blot analysis of various lysates using SERPINI2 Rabbit pAb (A11732) at 1:1000 dilution.

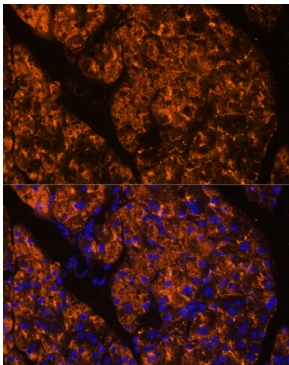
Secondary antibody: HRP-conjugated Goat anti-Rabbit IgG (H+L) (AS014) at 1:10000 dilution.

Lysates/proteins: 25µg per lane.

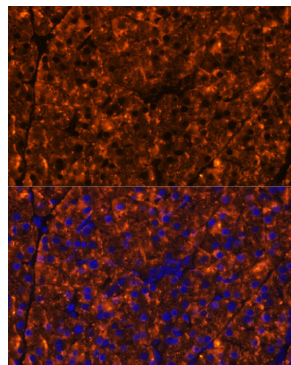
Blocking buffer: 3% nonfat dry milk in TBST.

Detection: ECL Basic Kit (RM00020).

Exposure time: 10s.



Immunofluorescence analysis of paraffin-embedded rat pancreas using SERPINI2 Rabbit pAb (A11732) at dilution of 1:100 (40x lens). Secondary antibody: Cy3-conjugated Goat anti-Rabbit IgG (H+L) (AS007) at 1:500 dilution. Blue: DAPI for nuclear staining.



Immunofluorescence analysis of paraffin-embedded mouse pancreas using SERPINI2 Rabbit pAb (A11732) at dilution of 1:100 (40x lens). Secondary antibody: Cy3-conjugated Goat anti-Rabbit IgG (H+L) (AS007) at 1:500 dilution. Blue: DAPI for nuclear staining.