

A11690

Leader in Biomolecular Solutions for Life Science



CHAMP1 Rabbit pAb

Catalog No.: A11690

Basic Information

Observed MW

130kDa

Calculated MW

89kDa

Category

Polyclonal Antibody

Applications

WB,IF/ICC,ELISA

Cross-Reactivity

Human,Mouse

Background

This gene encodes a zinc finger protein that functions as a regulator of chromosome segregation in mitosis. The encoded protein is required for correct alignment of chromosomes on the metaphase plate, and plays a role in maintaining the attachment of sister kinetochores to microtubules from opposite spindle poles. Mutations in this gene are associated with an autosomal dominant form of intellectual disability.

Recommended Dilutions

WB 1:500 - 1:2000

IF/ICC 1:50 - 1:100

ELISA Recommended starting concentration is 1 µg/mL. Please optimize the concentration based on your specific assay requirements.

Immunogen Information

Gene ID

283489

Swiss Prot

Q96JM3

Immunogen

Recombinant fusion protein containing a sequence corresponding to amino acids 563-812 of human CHAMP1 (NP_115812.1).

Synonyms

CAMP; CHAMP; MRD40; ZNF828; C13orf8; NEDHILD; CHAMP1

Contact

 www.abclonal.com

Product Information

Source

Rabbit

Isotype

IgG

Purification

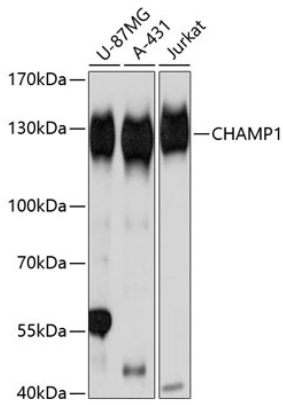
Affinity purification

Storage

Store at -20°C. Avoid freeze / thaw cycles.

Buffer: PBS with 0.01% thimerosal, 50% glycerol, pH7.3.

Validation Data



Western blot analysis of various lysates using CHAMP1 Rabbit pAb (A11690) at 1:3000 dilution.

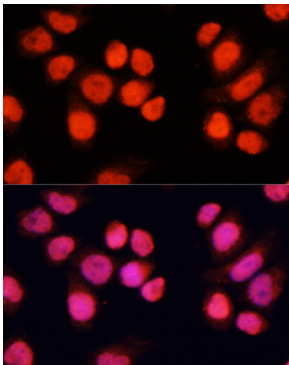
Secondary antibody: HRP-conjugated Goat anti-Rabbit IgG (H+L) (AS014) at 1:10000 dilution.

Lysates/proteins: 25µg per lane.

Blocking buffer: 3% nonfat dry milk in TBST.

Detection: ECL Basic Kit (RM00020).

Exposure time: 1s.



Immunofluorescence analysis of HeLa cells using CHAMP1 Rabbit pAb (A11690) at dilution of 1:100 (40x lens). Secondary antibody: Cy3-conjugated Goat anti-Rabbit IgG (H+L) (AS007) at 1:500 dilution. Blue: DAPI for nuclear staining.