

A11608

Leader in Biomolecular Solutions for Life Science



## MAT2B Rabbit pAb

Catalog No.: A11608

1 Publications

### Basic Information

#### Observed MW

37kDa

#### Calculated MW

38kDa

#### Category

Polyclonal Antibody

#### Applications

WB, ELISA

#### Cross-Reactivity

Human, Mouse

### Background

The protein encoded by this gene belongs to the methionine adenosyltransferase (MAT) family. MAT catalyzes the biosynthesis of S-adenosylmethionine from methionine and ATP. This protein is the regulatory beta subunit of MAT. Alternative splicing results in multiple transcript variants encoding different isoforms.

### Recommended Dilutions

WB 1:500 - 1:2000

### Immunogen Information

#### Gene ID

27430

#### Swiss Prot

Q9NZL9

#### Immunogen

Recombinant fusion protein containing a sequence corresponding to amino acids 1-334 of human MAT2B (NP\_037415.1).

#### Synonyms

TGR; MAT-II; SDR23E1; MATIIBeta; Nbla02999; MAT2B

### Contact



[www.abclonal.com](http://www.abclonal.com)

### Product Information

#### Source

Rabbit

#### Isotype

IgG

#### Purification

Affinity purification

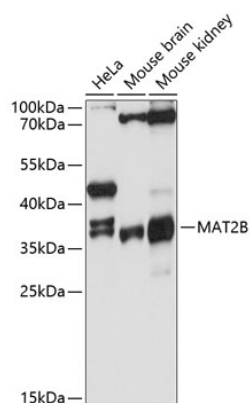
#### Storage

Store at -20°C. Avoid freeze / thaw cycles.

Buffer: PBS with 0.01% thimerosal, 50% glycerol, pH 7.3.

## Validation Data

---



Western blot analysis of various lysates using MAT2B Rabbit pAb (A11608) at 1:3000 dilution.  
Secondary antibody: HRP Goat Anti-Rabbit IgG (H+L) (AS014) at 1:10000 dilution.  
Lysates/proteins: 25µg per lane.  
Blocking buffer: 3% nonfat dry milk in TBST.  
Detection: ECL Basic Kit (RM00020).  
Exposure time: 30s.