

A11546

Leader in Biomolecular Solutions for Life Science



E2F6 Rabbit mAb

Catalog No.: A11546

Recombinant

1 Publications

Basic Information

Observed MW

36kDa

Calculated MW

32kDa

Category

SMab Recombinant Monoclonal
Antibody

Applications

WB,IP,ChIP,ELISA,CUT&Tag

Cross-Reactivity

Human

CloneNo number

ARC0628

Background

This gene encodes a member of a family of transcription factors that play a crucial role in the control of the cell cycle. The protein encoded by this gene lacks the transactivation and tumor suppressor protein association domains found in other family members, and contains a modular suppression domain that functions in the inhibition of transcription. It interacts in a complex with chromatin modifying factors. There are pseudogenes for this gene on chromosomes 22 and X. Alternative splicing results in multiple transcript variants.

Recommended Dilutions

WB 1:500 - 1:2000

IP 0.5µg-4µg antibody for
200µg-400µg extracts
of whole cells

ELISA Recommended starting
concentration is 1
µg/mL. Please optimize
the concentration
based on your specific
assay requirements.

ChIP 5µg antibody for
10µg-15µg of
Chromatin

CUT&Tag 10⁵ cells /1 µg

Contact



www.abclonal.com

Immunogen Information

Gene ID

1876

Swiss Prot

O75461

Immunogen

Recombinant fusion protein containing a sequence corresponding to amino acids 110-281 of human E2F6 (NP_937987.2)

Synonyms

E2F-6; E2F6

Product Information

Source

Rabbit

Isotype

IgG

Purification

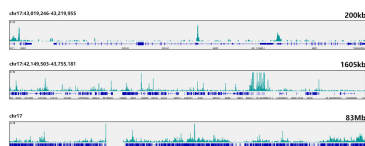
Affinity purification

Storage

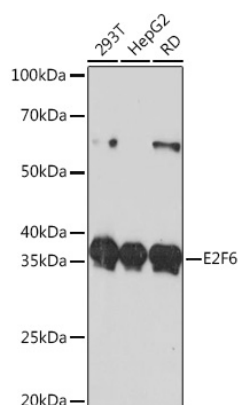
Store at -20°C. Avoid freeze / thaw cycles.

Buffer: PBS with 0.02% sodium azide, 0.05% BSA, 50% glycerol, pH7.3.

Validation Data



CUT&Tag was performed using the CUT&Tag Assay Kit (pAG-Tn5) for Illumina(RK20265) from 10^5 K562 cells with 1 μ g E2F6 Rabbit mAb (A11546), along with a Goat Anti-Rabbit IgG(H+L). The CUT&Tag results indicate the enrichment pattern of E2F6 in representative gene loci (BRCA1), as shown in figure.



Western blot analysis of various lysates using E2F6 Rabbit mAb (A11546) at 1:1000 dilution.

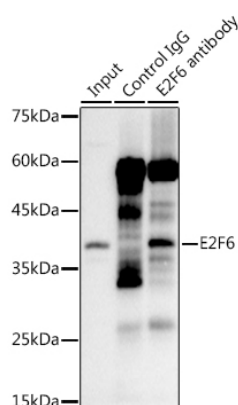
Secondary antibody: HRP-conjugated Goat anti-Rabbit IgG (H+L) (AS014) at 1:10000 dilution.

Lysates/proteins: 25 μ g per lane.

Blocking buffer: 3% nonfat dry milk in TBST.

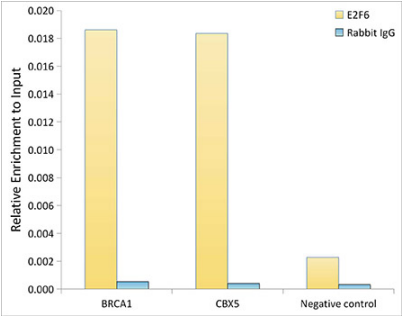
Detection: ECL Basic Kit (RM00020).

Exposure time: 90s.



Immunoprecipitation analysis of 300 μ g extracts of 293T cells using 3 μ g E2F6 antibody (A11546). Western blot was performed from the immunoprecipitate using E2F6 antibody (A11546) at a dilution of 1:1000.

Validation Data



Chromatin immunoprecipitation analysis of extracts of 293T cells, using E2F6 antibody (A11546) and rabbit IgG. The amount of immunoprecipitated DNA was checked by quantitative PCR. Histogram was constructed by the ratios of the immunoprecipitated DNA to the input.