

A11500

Leader in Biomolecular Solutions for Life Science



# ALDH2 Rabbit mAb

Catalog No.: A11500

Recombinant

1 Publications

## Basic Information

### Observed MW

56kDa

### Calculated MW

56kDa

### Category

SMab Recombinant Monoclonal  
Antibody

### Applications

WB,ELISA

### Cross-Reactivity

Human,Mouse,Rat

### CloneNo number

ARC0623

## Recommended Dilutions

**WB** 1:1000 - 1:6000

**ELISA** Recommended starting concentration is 1 µg/mL. Please optimize the concentration based on your specific assay requirements.

## Contact

 [www.abclonal.com](http://www.abclonal.com)

## Background

This protein belongs to the aldehyde dehydrogenase family of proteins. Aldehyde dehydrogenase is the second enzyme of the major oxidative pathway of alcohol metabolism. Two major liver isoforms of aldehyde dehydrogenase, cytosolic and mitochondrial, can be distinguished by their electrophoretic mobilities, kinetic properties, and subcellular localizations. Most Caucasians have two major isozymes, while approximately 50% of East Asians have the cytosolic isozyme but not the mitochondrial isozyme. A remarkably higher frequency of acute alcohol intoxication among East Asians than among Caucasians could be related to the absence of a catalytically active form of the mitochondrial isozyme. The increased exposure to acetaldehyde in individuals with the catalytically inactive form may also confer greater susceptibility to many types of cancer. This gene encodes a mitochondrial isoform, which has a low Km for acetaldehydes, and is localized in mitochondrial matrix. Alternative splicing results in multiple transcript variants encoding distinct isoforms.

## Immunogen Information

### Gene ID

217

### Swiss Prot

P05091

### Immunogen

Synthetic peptide. This information is considered to be commercially sensitive.

### Synonyms

ALDM; ALDHI; ALDH-E2; ALDH2

## Product Information

### Source

Rabbit

### Isotype

IgG

### Purification

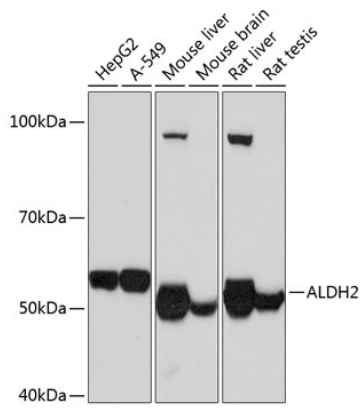
Affinity purification

### Storage

Store at -20°C. Avoid freeze / thaw cycles.

Buffer: PBS containing 50% glycerol and 0.05% BSA, preserved with proclin300 or sodium azide (as specified on the Certificate of Analysis), pH 7.3.

## Validation Data



Western blot analysis of various lysates using ALDH2 Rabbit mAb (A11500) at 1 : 1000 dilution.

Secondary antibody: HRP-conjugated Goat anti-Rabbit IgG (H+L) (AS014) at 1:10000 dilution.

Lysates/proteins: 25µg per lane.

Blocking buffer: 3% nonfat dry milk in TBST.

Detection: ECL Basic Kit (RM00020).

Exposure time: 5s.