

A11475

Leader in Biomolecular Solutions for Life Science



MCM3 Rabbit mAb

Catalog No.: A11475

Recombinant

1 Publications

Basic Information

Observed MW

100kDa

Calculated MW

91kDa

Category

SMab Recombinant Monoclonal
Antibody

Applications

WB,IHC-P,IF/ICC,IP,ELISA

Cross-Reactivity

Human,Mouse,Rat

CloneNo number

ARC0607

Recommended Dilutions

WB 1:500 - 1:1000

IHC-P 1:50 - 1:200

IF/ICC 1:50 - 1:200

IP 0.5µg-4µg antibody for
200µg-400µg extracts
of whole cells

ELISA Recommended starting
concentration is 1
µg/mL. Please optimize
the concentration
based on your specific
assay requirements.

Contact



www.abclonal.com

Background

The protein encoded by this gene is one of the highly conserved mini-chromosome maintenance proteins (MCM) that are involved in the initiation of eukaryotic genome replication. The hexameric protein complex formed by MCM proteins is a key component of the pre-replication complex (pre_RC) and may be involved in the formation of replication forks and in the recruitment of other DNA replication related proteins. This protein is a subunit of the protein complex that consists of MCM2-7. It has been shown to interact directly with MCM5/CDC46. This protein also interacts with and is acetylated by MCM3AP, a chromatin-associated acetyltransferase. The acetylation of this protein inhibits the initiation of DNA replication and cell cycle progression. Several transcript variants encoding different isoforms have been found for this gene.

Immunogen Information

Gene ID

4172

Swiss Prot

P25205

Immunogen

Synthetic peptide. This information is considered to be commercially sensitive.

Synonyms

HCC5; P1.h; RLFB; P1-MCM3; MCM3

Product Information

Source

Rabbit

Isotype

IgG

Purification

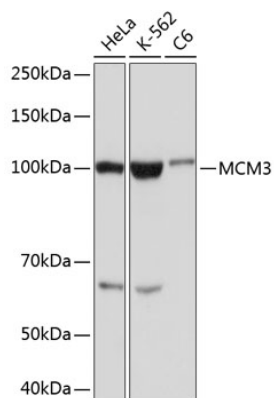
Affinity purification

Storage

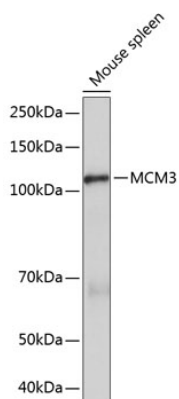
Store at -20°C. Avoid freeze / thaw cycles.

Buffer: PBS containing 50% glycerol and 0.05% BSA, preserved with proclin300 or sodium azide (as specified on the Certificate of Analysis), pH 7.3.

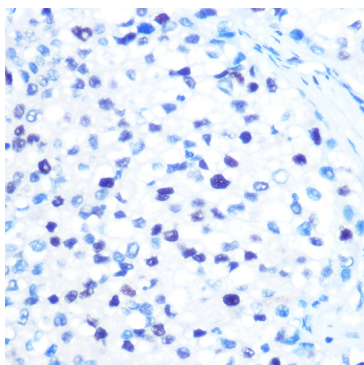
Validation Data



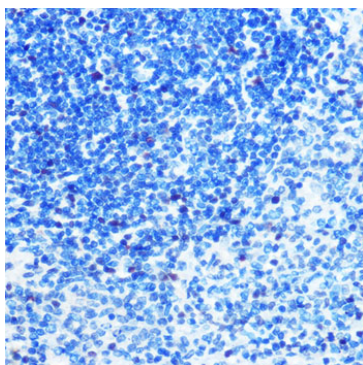
Western blot analysis of various lysates using MCM3 Rabbit mAb (A11475) at 1:1000 dilution incubated overnight at 4°C.
 Secondary antibody: HRP-conjugated Goat anti-Rabbit IgG (H+L) (AS014) at 1:10000 dilution.
 Lysates/proteins: 25µg per lane.
 Blocking buffer: 3% nonfat dry milk in TBST.
 Detection: ECL Basic Kit (RM00020).
 Exposure time: 10s.



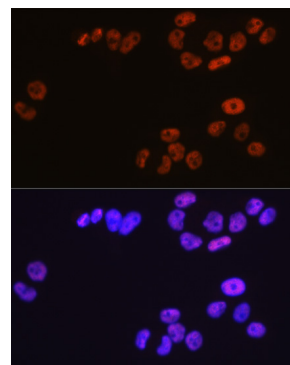
Western blot analysis of lysates from Mouse spleen, using MCM3 Rabbit mAb (A11475) at 1:1000 dilution incubated overnight at 4°C.
 Secondary antibody: HRP-conjugated Goat anti-Rabbit IgG (H+L) (AS014) at 1:10000 dilution.
 Lysates/proteins: 25µg per lane.
 Blocking buffer: 3% nonfat dry milk in TBST.
 Detection: ECL Enhanced Kit (RM00021).
 Exposure time: 3min.



Immunohistochemistry analysis of paraffin-embedded Human liver cancer using MCM3 Rabbit mAb (A11475) at dilution of 1:100 (40x lens). Microwave antigen retrieval performed with 0.01M PBS Buffer (pH 7.2) prior to IHC staining.

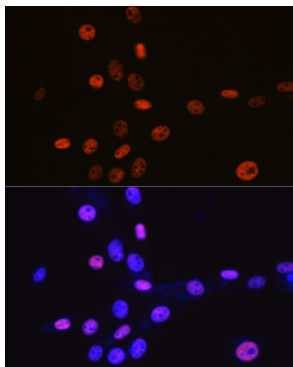


Immunohistochemistry analysis of paraffin-embedded Rat spleen using MCM3 Rabbit mAb (A11475) at dilution of 1:100 (40x lens). Microwave antigen retrieval performed with 0.01M PBS Buffer (pH 7.2) prior to IHC staining.

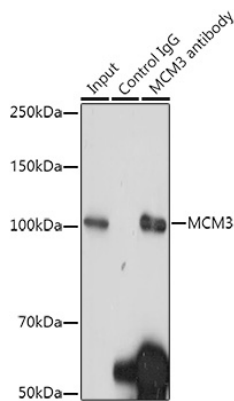


Immunofluorescence analysis of HeLa cells using MCM3 Rabbit mAb (A11475) at dilution of 1:100 (40x lens). Secondary antibody: Cy3-conjugated Goat anti-Rabbit IgG (H+L) (AS007) at 1:500 dilution. Blue: DAPI for nuclear staining.

Validation Data



Immunofluorescence analysis of NIH-3T3 cells using MCM3 Rabbit mAb (A11475) at dilution of 1:100 (40x lens). Secondary antibody: Cy3-conjugated Goat anti-Rabbit IgG (H+L) (AS007) at 1:500 dilution. Blue: DAPI for nuclear staining.



Immunoprecipitation analysis of 300 µg extracts of HeLa cells using 3 µg MCM3 antibody (A11475). Western blot was performed from the immunoprecipitate using MCM3 antibody (A11475) at a dilution of 1:1000.