

A11154

Leader in Biomolecular Solutions for Life Science



MTCO2 Rabbit pAb

Catalog No.: A11154

1 Publications

Basic Information

Observed MW

24kDa

Calculated MW

26kDa

Category

Polyclonal Antibody

Applications

WB,IHC-P,IF/ICC,ELISA

Cross-Reactivity

Human,Mouse,Rat

Background

Predicted to enable copper ion binding activity and oxidoreductase activity. Predicted to contribute to cytochrome-c oxidase activity. Predicted to be involved in ATP synthesis coupled electron transport; positive regulation of cellular biosynthetic process; and positive regulation of necrotic cell death. Located in mitochondrion. Is expressed in embryo; epiblast; heart; liver; and metanephros. Orthologous to several human genes including MTCO2P12 (MT-CO2 pseudogene 12).

Recommended Dilutions

WB 1:500 - 1:2000

IHC-P 1:100 - 1:500

IF/ICC 1:50 - 1:200

ELISA Recommended starting concentration is 1 µg/mL. Please optimize the concentration based on your specific assay requirements.

Immunogen Information

Gene ID

17709

Swiss Prot

P00403

Immunogen

A synthetic peptide corresponding to a sequence within amino acids 101-200 of mouse MTCO2 (NP_904331.1).

Synonyms

COX2; MTCO2

Product Information

Source

Rabbit

Isotype

IgG

Purification

Affinity purification

Storage

Store at -20°C. Avoid freeze / thaw cycles.

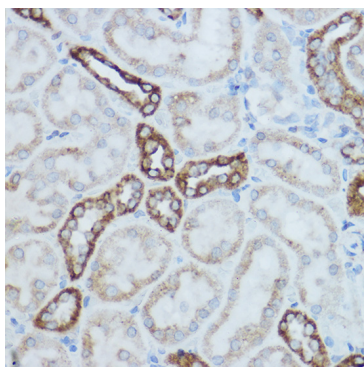
Buffer: PBS with 0.02% sodium azide, 50% glycerol, pH7.3.

Contact

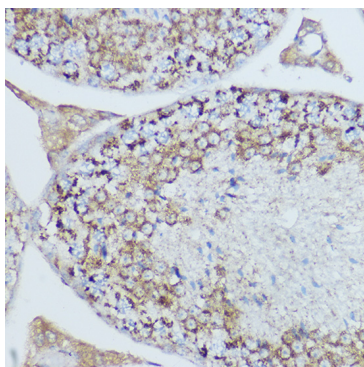


www.abclonal.com

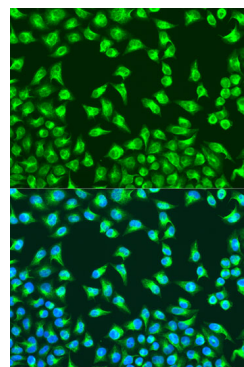
Validation Data



Immunohistochemistry analysis of paraffin-embedded Mouse kidney using MTCO2 Rabbit pAb (A11154) at dilution of 1:500 (40x lens). High pressure antigen retrieval performed with 0.01M Citrate Bufferr (pH 6.0) prior to IHC staining.



Immunohistochemistry analysis of paraffin-embedded Rat testis using MTCO2 Rabbit pAb (A11154) at dilution of 1:500 (40x lens). High pressure antigen retrieval performed with 0.01M Citrate Bufferr (pH 6.0) prior to IHC staining.



Immunofluorescence analysis of U2OS cells using MTCO2 Rabbit pAb (A11154) at dilution of 1:100. Secondary antibody: Cy3-conjugated Goat anti-Rabbit IgG (H+L) (AS007) at 1:500 dilution. Blue: DAPI for nuclear staining.