

A10956

Leader in Biomolecular Solutions for Life Science



RNF166 Rabbit pAb

Catalog No.: A10956

Basic Information

Observed MW

26kDa

Calculated MW

26kDa

Category

Polyclonal Antibody

Applications

WB,IF/ICC,ELISA

Cross-Reactivity

Human,Mouse

Background

Predicted to enable ubiquitin protein ligase activity. Predicted to be involved in protein polyubiquitination and ubiquitin-dependent protein catabolic process. Predicted to be located in cytoplasm.

Recommended Dilutions

WB 1:500 - 1:1000

IF/ICC 1:20 - 1:50

ELISA Recommended starting concentration is 1 µg/mL. Please optimize the concentration based on your specific assay requirements.

Immunogen Information

Gene ID

115992

Swiss Prot

Q96A37

Immunogen

Recombinant protein (or fragment). This information is considered to be commercially sensitive.

Synonyms

RNF166

Contact

 www.abclonal.com

Product Information

Source

Rabbit

Isotype

IgG

Purification

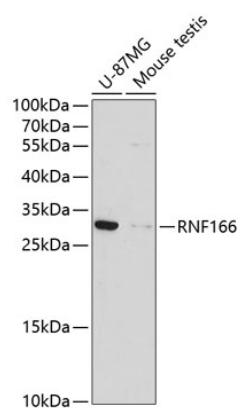
Affinity purification

Storage

Store at -20°C. Avoid freeze / thaw cycles.

Buffer: PBS with 0.02% sodium azide, 50% glycerol, pH7.3.

Validation Data



Western blot analysis of various lysates using RNF166 Rabbit pAb (A10956) at 1:1000 dilution.

Secondary antibody: HRP-conjugated Goat anti-Rabbit IgG (H+L) (AS014) at 1:10000 dilution.

Lysates/proteins: 25µg per lane.

Blocking buffer: 3% nonfat dry milk in TBST.

Detection: ECL Basic Kit (RM00020).

Exposure time: 90s.