

A10757

Leader in Biomolecular Solutions for Life Science



Cyclin D1 Rabbit mAb

Catalog No.: A10757

Recombinant

9 Publications

Basic Information

Observed MW

34kDa

Calculated MW

34kDa

Category

SMab Recombinant Monoclonal
Antibody

Applications

WB,IHC-P,IF/ICC,IP,ELISA

Cross-Reactivity

Human,Mouse,Rat

Background

The protein encoded by this gene belongs to the highly conserved cyclin family, whose members are characterized by a dramatic periodicity in protein abundance throughout the cell cycle. Cyclins function as regulators of CDK kinases. Different cyclins exhibit distinct expression and degradation patterns which contribute to the temporal coordination of each mitotic event. This cyclin forms a complex with and functions as a regulatory subunit of CDK4 or CDK6, whose activity is required for cell cycle G1/S transition. This protein has been shown to interact with tumor suppressor protein Rb and the expression of this gene is regulated positively by Rb. Mutations, amplification and overexpression of this gene, which alters cell cycle progression, are observed frequently in a variety of human cancers.

Recommended Dilutions

WB 1:1000 - 1:5000

IHC-P 1:50 - 1:200

IF/ICC 1:50 - 1:100

IP 1:20 - 1:50

ELISA Recommended starting
concentration is 1
μg/mL. Please optimize
the concentration
based on your specific
assay requirements.

Immunogen Information

Gene ID

595

Swiss Prot

P24385

Immunogen

Recombinant protein (or fragment). This information is considered to be commercially sensitive.

Synonyms

BCL1; PRAD1; U21B31; D11S287E; Cyclin D1

Product Information

Source

Rabbit

Isotype

IgG

Purification

Affinity purification

Storage

Store at -20°C. Avoid freeze / thaw cycles.

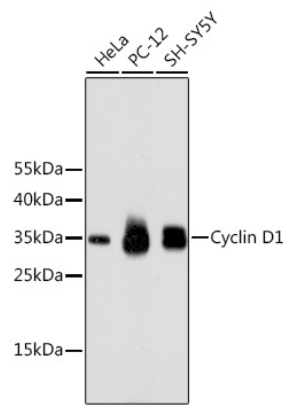
Buffer: PBS with 0.02% sodium azide, 50% glycerol, pH7.3.

Contact



www.abclonal.com

Validation Data



Western blot analysis of various lysates using Cyclin D1 Rabbit mAb (A10757).
Secondary antibody: HRP-conjugated Goat anti-Rabbit IgG (H+L) (AS014) at 1:10000 dilution.
Lysates/proteins: 25µg per lane.
Blocking buffer: 3% nonfat dry milk in TBST.