

A10719

Leader in Biomolecular Solutions for Life Science



# WDR43 Rabbit pAb

Catalog No.: A10719

1 Publications

## Basic Information

### Observed MW

75kDa

### Calculated MW

75kDa

### Category

Polyclonal Antibody

### Applications

WB, ELISA

### Cross-Reactivity

Human, Mouse

## Background

Enables RNA polymerase II complex binding activity and transcription elongation regulator activity. Involved in regulation of stem cell population maintenance and regulation of transcription elongation from RNA polymerase II promoter. Located in chromatin; nucleolus; and nucleoplasm. Is expressed in alimentary system; axial musculature; clavicle; renal cortex; and vibrissa. Orthologous to human WDR43 (WD repeat domain 43).

## Recommended Dilutions

**WB** 1:500 - 1:1000

**ELISA** Recommended starting concentration is 1 µg/mL. Please optimize the concentration based on your specific assay requirements.

## Immunogen Information

### Gene ID

72515

### Swiss Prot

### Immunogen

Recombinant fusion protein containing a sequence corresponding to amino acids 1-332 of mouse WDR43 (NP\_783570.1).

### Synonyms

Wrd43; mKIAA0007; 2610318G08Rik; WDR43

## Contact



[www.abclonal.com](http://www.abclonal.com)

## Product Information

### Source

Rabbit

### Isotype

IgG

### Purification

Affinity purification

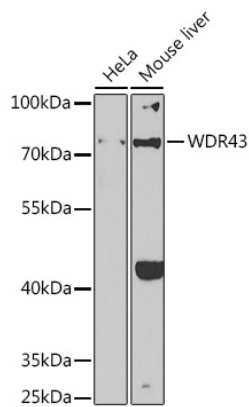
### Storage

Store at -20°C. Avoid freeze / thaw cycles.

Buffer: PBS with 0.02% sodium azide, 50% glycerol, pH 7.3.

## Validation Data

---



Western blot analysis of various lysates using WDR43 Rabbit pAb (A10719) at 1:1000 dilution.

Secondary antibody: HRP-conjugated Goat anti-Rabbit IgG (H+L) (AS014) at 1:10000 dilution.

Lysates/proteins: 25µg per lane.

Blocking buffer: 3% nonfat dry milk in TBST.

Detection: ECL Basic Kit (RM00020).

Exposure time: 60s.