

A10658

Leader in Biomolecular Solutions for Life Science



SLC35A1 Rabbit pAb

Catalog No.: A10658

Basic Information

Observed MW

33kDa

Calculated MW

37kDa

Category

Polyclonal Antibody

Applications

WB, ELISA

Cross-Reactivity

Human, Mouse

Background

The protein encoded by this gene is found in the membrane of the Golgi apparatus, where it transports nucleotide sugars into the Golgi. One such nucleotide sugar is CMP-sialic acid, which is imported into the Golgi by the encoded protein and subsequently glycosylated. Defects in this gene are a cause of congenital disorder of glycosylation type 2F (CDG2F). Two transcript variants encoding different isoforms have been found for this gene.

Recommended Dilutions

WB 1:500 - 1:2000

ELISA Recommended starting concentration is 1 µg/mL. Please optimize the concentration based on your specific assay requirements.

Immunogen Information

Gene ID

10559

Swiss Prot

P78382

Immunogen

Recombinant fusion protein containing a sequence corresponding to amino acids 1-100 of human SLC35A1 (NP_006407.1).

Synonyms

CST; hCST; CDG2F; CMPST; SLC35A1

Contact



www.abclonal.com

Product Information

Source

Rabbit

Isotype

IgG

Purification

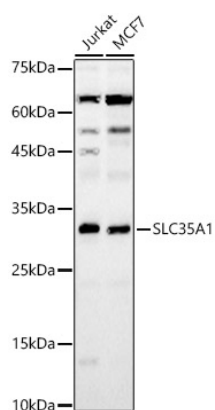
Affinity purification

Storage

Store at -20°C. Avoid freeze / thaw cycles.

Buffer: PBS with 0.02% sodium azide, 50% glycerol, pH7.3.

Validation Data



Western blot analysis of various lysates, using SLC35A1 Rabbit pAb (A10658) at 1:3000 dilution.

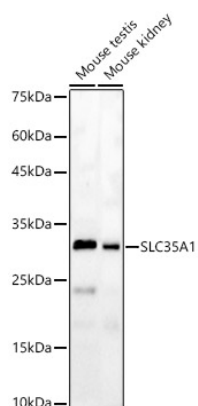
Secondary antibody: HRP-conjugated Goat anti-Rabbit IgG (H+L) (AS014) at 1:10000 dilution.

Lysates/proteins: 25µg per lane.

Blocking buffer: 3% nonfat dry milk in TBST.

Detection: ECL Basic Kit (RM00020).

Exposure time: 60s.



Western blot analysis of various lysates, using SLC35A1 Rabbit pAb (A10658) at 1:3000 dilution.

Secondary antibody: HRP-conjugated Goat anti-Rabbit IgG (H+L) (AS014) at 1:10000 dilution.

Lysates/proteins: 25µg per lane.

Blocking buffer: 3% nonfat dry milk in TBST.

Detection: ECL Basic Kit (RM00020).

Exposure time: 60s.