

A10560

Leader in Biomolecular Solutions for Life Science



# GDF10 Rabbit pAb

Catalog No.: A10560

## Basic Information

### Observed MW

53kDa

### Calculated MW

53kDa

### Category

Polyclonal Antibody

### Applications

WB,ELISA

### Cross-Reactivity

Human,Mouse,Rat

## Background

This gene encodes a secreted ligand of the TGF-beta (transforming growth factor-beta) superfamily of proteins. Ligands of this family bind various TGF-beta receptors leading to recruitment and activation of SMAD family transcription factors that regulate gene expression. The encoded preproprotein is proteolytically processed to generate each subunit of the disulfide-linked homodimer. This promotes neural repair after stroke. Additionally, this protein may act as a tumor suppressor and reduced expression of this gene is associated with oral cancer.

## Recommended Dilutions

**WB** 1:1000 - 1:2000

**ELISA** Recommended starting concentration is 1 µg/mL. Please optimize the concentration based on your specific assay requirements.

## Immunogen Information

### Gene ID

2662

### Swiss Prot

P55107

### Immunogen

Recombinant fusion protein containing a sequence corresponding to amino acids 369-478 of human GDF10 (NP\_004953.1).

### Synonyms

BIP; BMP3B; BMP-3b; GDF10

## Contact

 [www.abclonal.com](http://www.abclonal.com)

## Product Information

### Source

Rabbit

### Isotype

IgG

### Purification

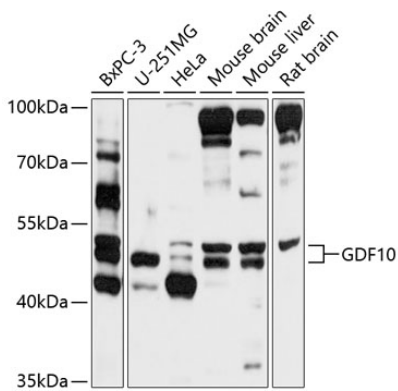
Affinity purification

### Storage

Store at -20°C. Avoid freeze / thaw cycles.

Buffer: PBS with 0.02% sodium azide,50% glycerol,pH7.3.

## Validation Data



Western blot analysis of various lysates using GDF10 Rabbit pAb (A10560) at 1:1000 dilution.  
Secondary antibody: HRP-conjugated Goat anti-Rabbit IgG (H+L) (AS014) at 1:10000 dilution.  
Lysates/proteins: 25µg per lane.  
Blocking buffer: 3% nonfat dry milk in TBST.  
Detection: ECL Basic Kit (RM00020).  
Exposure time: 10s.