

A10558

Leader in Biomolecular Solutions for Life Science



AP1S1 Rabbit pAb

Catalog No.: A10558

Basic Information

Observed MW

19kDa

Calculated MW

19kDa

Category

Polyclonal Antibody

Applications

WB, ELISA

Cross-Reactivity

Human

Background

The protein encoded by this gene is part of the clathrin coat assembly complex which links clathrin to receptors in coated vesicles. These vesicles are involved in endocytosis and Golgi processing. This protein, as well as beta-prime-adaptin, gamma-adaptin, and the medium (mu) chain AP47, form the AP-1 assembly protein complex located at the Golgi vesicle.

Recommended Dilutions

WB 1:500 - 1:1000

Immunogen Information

Gene ID

1174

Swiss Prot

P61966

Immunogen

Recombinant fusion protein containing a sequence corresponding to amino acids 1-120 of human AP1S1 (NP_001274.1).

Synonyms

AP19; EKV3; CLAPS1; MEDNIK; SIGMA1A; AP1S1

Contact



www.abclonal.com

Product Information

Source

Rabbit

Isotype

IgG

Purification

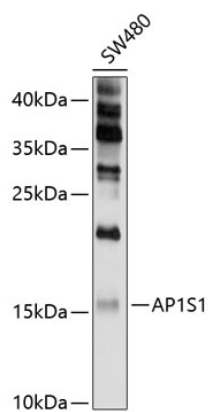
Affinity purification

Storage

Store at -20°C. Avoid freeze / thaw cycles.

Buffer: PBS with 0.02% sodium azide, 50% glycerol, pH 7.3.

Validation Data



Western blot analysis of lysates from SW480 cells, using AP1S1 Rabbit pAb (A10558) at 1:1000 dilution.
Secondary antibody: HRP Goat Anti-Rabbit IgG (H+L) (AS014) at 1:10000 dilution.
Lysates/proteins: 25µg per lane.
Blocking buffer: 3% nonfat dry milk in TBST.
Detection: ECL Enhanced Kit (RM00021).
Exposure time: 30s.