

A10540

Leader in Biomolecular Solutions for Life Science



## SGCG Rabbit pAb

Catalog No.: A10540

### Basic Information

#### Observed MW

37kDa

#### Calculated MW

32kDa

#### Category

Polyclonal Antibody

#### Applications

WB, ELISA

#### Cross-Reactivity

Human

### Background

This gene encodes gamma-sarcoglycan, one of several sarcolemmal transmembrane glycoproteins that interact with dystrophin. The dystrophin-glycoprotein complex (DGC) spans the sarcolemma and is comprised of dystrophin, syntrophin, alpha- and beta-dystroglycans and sarcoglycans. The DGC provides a structural link between the subsarcolemmal cytoskeleton and the extracellular matrix of muscle cells. Defects in the encoded protein can lead to early onset autosomal recessive muscular dystrophy, in particular limb-girdle muscular dystrophy, type 2C (LGMD2C).

### Recommended Dilutions

**WB** 1:1000 - 1:2000

**ELISA** Recommended starting concentration is 1 µg/mL. Please optimize the concentration based on your specific assay requirements.

### Immunogen Information

#### Gene ID

6445

#### Swiss Prot

Q13326

#### Immunogen

Recombinant fusion protein containing a sequence corresponding to amino acids 72-291 of human SGCG (NP\_000222.1).

#### Synonyms

A4; MAM; DMDA; SCG3; 35DAG; DAGA4; DMDA1; LGMD2C; LGMDR5; SCARMD2; gamma-SG; SGCG

### Contact

 [www.abclonal.com](http://www.abclonal.com)

### Product Information

#### Source

Rabbit

#### Isotype

IgG

#### Purification

Affinity purification

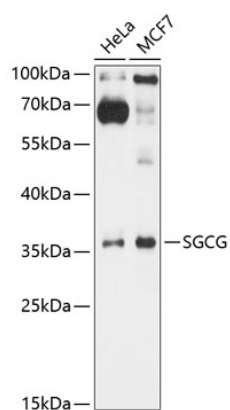
#### Storage

Store at -20°C. Avoid freeze / thaw cycles.

Buffer: PBS with 0.01% thimerosal, 50% glycerol, pH7.3.

## Validation Data

---



Western blot analysis of various lysates using SGCG Rabbit pAb (A10540) at 1:1000 dilution.

Secondary antibody: HRP-conjugated Goat anti-Rabbit IgG (H+L) (AS014) at 1:10000 dilution.

Lysates/proteins: 25µg per lane.

Blocking buffer: 3% nonfat dry milk in TBST.

Detection: ECL Basic Kit (RM00020).

Exposure time: 10s.