

A10520

Leader in Biomolecular Solutions for Life Science



NEPRO Rabbit pAb

Catalog No.: A10520

Basic Information

Observed MW

63kDa

Calculated MW

63kDa

Category

Polyclonal Antibody

Applications

WB, ELISA

Cross-Reactivity

Human, Mouse, Rat

Background

Acts upstream of or within negative regulation of neuron differentiation and positive regulation of Notch signaling pathway. Located in nucleolus. Is expressed in several structures, including adipose tissue; alimentary system; genitourinary system; integumental system; and nervous system. Human ortholog(s) of this gene implicated in anauxetic dysplasia 3. Orthologous to human NEPRO (nucleolus and neural progenitor protein).

Recommended Dilutions

WB 1:100 - 1:500

ELISA Recommended starting concentration is 1 µg/mL. Please optimize the concentration based on your specific assay requirements.

Immunogen Information

Gene ID

212547

Swiss Prot

Immunogen

Recombinant protein (or fragment). This information is considered to be commercially sensitive.

Synonyms

NEPRO; C3orf17; NET17; bc027231

Contact

 www.abclonal.com

Product Information

Source

Rabbit

Isotype

IgG

Purification

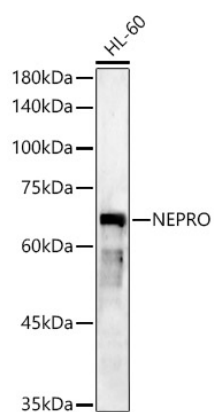
Affinity purification

Storage

Store at -20°C. Avoid freeze / thaw cycles.

Buffer: PBS containing 50% glycerol, preserved with proclin300 or sodium azide (as specified on the Certificate of Analysis), pH 7.3.

Validation Data



Western blot analysis of lysates from HL-60 cells, using NEPRO Rabbit pAb (A10520) at 1:500 dilution.

Secondary antibody: HRP-conjugated Goat anti-Rabbit IgG (H+L) (AS014) at 1:10000 dilution.

Lysates/proteins: 25µg per lane.

Blocking buffer: 3% nonfat dry milk in TBST.

Detection: ECL Basic Kit (RM00020).

Exposure time: 90s.