

A10517

Leader in Biomolecular Solutions for Life Science



ApoER2/LRP8 Rabbit pAb

Catalog No.: A10517

2 Publications

Basic Information

Observed MW

105-120kDa

Calculated MW

106kDa

Category

Polyclonal Antibody

Applications

WB,IHC-P,ELISA,IF-P

Cross-Reactivity

Human,Rat

Background

This gene encodes a member of the low density lipoprotein receptor (LDLR) family. Low density lipoprotein receptors are cell surface proteins that play roles in both signal transduction and receptor-mediated endocytosis of specific ligands for lysosomal degradation. The encoded protein plays a critical role in the migration of neurons during development by mediating Reelin signaling, and also functions as a receptor for the cholesterol transport protein apolipoprotein E. Expression of this gene may be a marker for major depressive disorder. Alternatively spliced transcript variants encoding multiple isoforms have been observed for this gene.

Recommended Dilutions

WB 1:500 - 1:2000

IF-P 1:50 - 1:200

IHC-P 1:50 - 1:200

ELISA Recommended starting concentration is 1 µg/mL. Please optimize the concentration based on your specific assay requirements.

Immunogen Information

Gene ID

7804

Swiss Prot

Q14114

Immunogen

Synthetic peptide. This information is considered to be commercially sensitive.

Synonyms

MCI1; LRP-8; APOER2; HSZ75190; ApoER2/LRP8

Product Information

Source

Rabbit

Isotype

IgG

Purification

Affinity purification

Storage

Store at -20°C. Avoid freeze / thaw cycles.

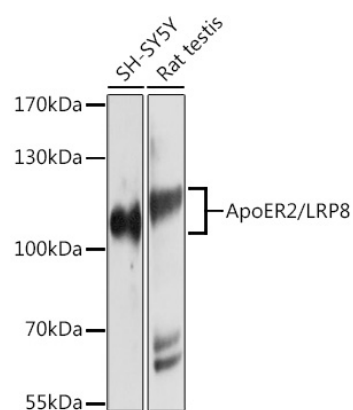
Buffer: PBS containing 50% glycerol, preserved with proclin300 or sodium azide (as specified on the Certificate of Analysis), pH 7.3.

Contact

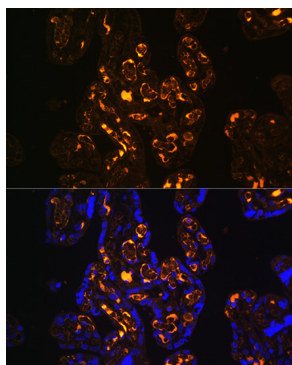


www.abclonal.com

Validation Data



Western blot analysis of various lysates using ApoER2/LRP8 Rabbit pAb (A10517) at 1:1000 dilution.
Secondary antibody: HRP-conjugated Goat anti-Rabbit IgG (H+L) (AS014) at 1:10000 dilution.
Lysates/proteins: 25µg per lane.
Blocking buffer: 3% nonfat dry milk in TBST.
Detection: ECL Basic Kit (RM00020).
Exposure time: 30s.



Immunofluorescence analysis of Human placenta using ApoER2/LRP8 Rabbit pAb (A10517) at dilution of 1:100. Blue: DAPI for nuclear staining.