

A10512

Leader in Biomolecular Solutions for Life Science



# PCDH17 Rabbit pAb

Catalog No.: A10512 **2 Publications**

## Basic Information

### Observed MW

150kDa

### Calculated MW

126kDa

### Category

Polyclonal Antibody

### Applications

WB,ELISA

### Cross-Reactivity

Human

## Background

This gene belongs to the protocadherin gene family, a subfamily of the cadherin superfamily. The encoded protein contains six extracellular cadherin domains, a transmembrane domain, and a cytoplasmic tail differing from those of the classical cadherins. The encoded protein may play a role in the establishment and function of specific cell-cell connections in the brain.

## Recommended Dilutions

WB 1:500 - 1:1000

## Immunogen Information

### Gene ID

27253

### Swiss Prot

O14917

### Immunogen

Recombinant fusion protein containing a sequence corresponding to amino acids 610-710 of human PCDH17 (NP\_001035519.1).

### Synonyms

PCH68; PCDH68; PCDH17

## Contact

 [www.abclonal.com](http://www.abclonal.com)

## Product Information

### Source

Rabbit

### Isotype

IgG

### Purification

Affinity purification

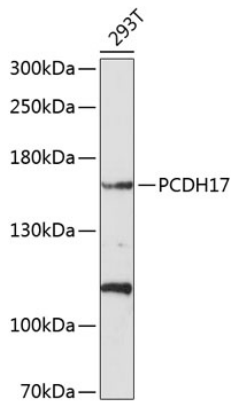
### Storage

Store at -20°C. Avoid freeze / thaw cycles.

Buffer: PBS with 0.02% sodium azide, 50% glycerol, pH7.3.

## Validation Data

---



Western blot analysis of lysates from 293T cells, using PCDH17 Rabbit pAb (A10512) at 1:1000 dilution.

Secondary antibody: HRP Goat Anti-Rabbit IgG (H+L) (AS014) at 1:10000 dilution.

Lysates/proteins: 25µg per lane.

Blocking buffer: 3% nonfat dry milk in TBST.

Detection: ECL Enhanced Kit (RM00021).

Exposure time: 60s.