

A1051

Leader in Biomolecular Solutions for Life Science



Smad7 Rabbit pAb

Catalog No.: A1051

Basic Information

Observed MW

46kDa

Calculated MW

46kDa

Category

Polyclonal Antibody

Applications

WB,ELISA

Cross-Reactivity

Human

Background

The protein encoded by this gene is a nuclear protein that binds the E3 ubiquitin ligase SMURF2. Upon binding, this complex translocates to the cytoplasm, where it interacts with TGF-beta receptor type-1 (TGFB1), leading to the degradation of both the encoded protein and TGFB1. Expression of this gene is induced by TGFB1. Variations in this gene are a cause of susceptibility to colorectal cancer type 3 (CRC3). Several transcript variants encoding different isoforms have been found for this gene.

Recommended Dilutions

WB 1:500 - 1:1000

ELISA Recommended starting concentration is 1 µg/mL. Please optimize the concentration based on your specific assay requirements.

Immunogen Information

Gene ID

4092

Swiss Prot

O15105

Immunogen

Recombinant fusion protein containing a sequence corresponding to amino acids 220-390 of human Smad7 (NP_005895.1).

Synonyms

CRC3; MADH7; MADH8; Smad7

Contact

 www.abclonal.com

Product Information

Source

Rabbit

Isotype

IgG

Purification

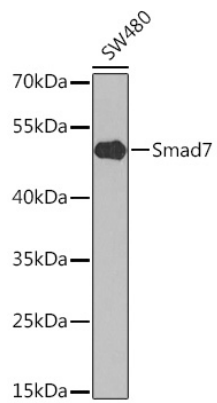
Affinity purification

Storage

Store at -20°C. Avoid freeze / thaw cycles.

Buffer: PBS with 0.02% sodium azide, 50% glycerol, pH7.3.

Validation Data



Western blot analysis of lysates from SW480 cells, using Smad7 Rabbit pAb (A1051) at 1:1000 dilution.

Secondary antibody: HRP-conjugated Goat anti-Rabbit IgG (H+L) (AS014) at 1:10000 dilution.

Lysates/proteins: 25µg per lane.

Blocking buffer: 3% nonfat dry milk in TBST.

Detection: ECL Basic Kit (RM00020).

Exposure time: 10s.