

A10500

Leader in Biomolecular Solutions for Life Science



# CLEC4G Rabbit pAb

Catalog No.: A10500

## Basic Information

### Observed MW

38kDa

### Calculated MW

33kDa

### Category

Polyclonal Antibody

### Applications

WB,ELISA

### Cross-Reactivity

Human

## Background

This gene encodes a glycan-binding receptor and member of the C-type lectin family which plays a role in the immune response. C-type lectin receptors are pattern recognition receptors located on immune cells that play a role in the recognition and uptake of both self and non-self glycoproteins as well as mediating cell adhesion, glycoprotein clearance, and cell signaling functions. This gene's protein binds complex-type N-glycans of the viral envelope proteins of Ebola virus, West Nile filovirus, and SARS coronavirus, but not HIV or hepatitis C virus. In mouse, this protein has been shown to recognize activated T-cells and to negatively regulate T-cell receptor-mediated signalling. It also acts as a novel, liver-specific regulator of NK cell-mediated immunity in mouse. Multiple transcript variants encoding different isoforms have been found for this gene.

## Recommended Dilutions

**WB** 1:500 - 1:1000

**ELISA** Recommended starting concentration is 1 µg/mL. Please optimize the concentration based on your specific assay requirements.

## Immunogen Information

### Gene ID

339390

### Swiss Prot

Q6UXB4

### Immunogen

Recombinant fusion protein containing a sequence corresponding to amino acids 54-293 of human CLEC4G (NP\_940894.1).

### Synonyms

LP2698; UNQ431; DTTR431; LSEctin; CLEC4G

## Contact

 [www.abclonal.com](http://www.abclonal.com)

## Product Information

### Source

Rabbit

### Isotype

IgG

### Purification

Affinity purification

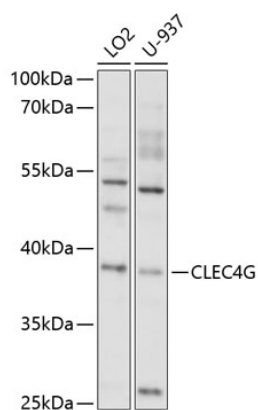
### Storage

Store at -20°C. Avoid freeze / thaw cycles.

Buffer: PBS with 0.02% sodium azide, 50% glycerol, pH7.3.

## Validation Data

---



Western blot analysis of various lysates using CLEC4G Rabbit pAb (A10500) at 1:1000 dilution.

Secondary antibody: HRP-conjugated Goat anti-Rabbit IgG (H+L) (AS014) at 1:10000 dilution.

Lysates/proteins: 25µg per lane.

Blocking buffer: 3% nonfat dry milk in TBST.

Detection: ECL Enhanced Kit (RM00021).

Exposure time: 90s.