

A10480

Leader in Biomolecular Solutions for Life Science



## INTS9 Rabbit pAb

Catalog No.: A10480

### Basic Information

#### Observed MW

74kDa

#### Calculated MW

74kDa

#### Category

Polyclonal Antibody

#### Applications

WB,ELISA

#### Cross-Reactivity

Human,Mouse,Rat

### Background

This gene encodes a subunit of the Integrator complex. This protein complex binds the C-terminal domain of RNA polymerase II and likely plays a role in small nuclear RNA processing. The encoded protein has similarities to the subunits of the cleavage and polyadenylation specificity factor complex. Alternatively spliced transcript variants have been described.

### Recommended Dilutions

**WB** 1:500 - 1:1000

**ELISA** Recommended starting concentration is 1 µg/mL. Please optimize the concentration based on your specific assay requirements.

### Immunogen Information

#### Gene ID

55756

#### Swiss Prot

Q9NV88

#### Immunogen

Recombinant fusion protein containing a sequence corresponding to amino acids 459-658 of human INTS9 (NP\_060720.2).

#### Synonyms

INT9; RC74; CPSF2L; INTS9

### Contact



[www.abclonal.com](http://www.abclonal.com)

### Product Information

#### Source

Rabbit

#### Isotype

IgG

#### Purification

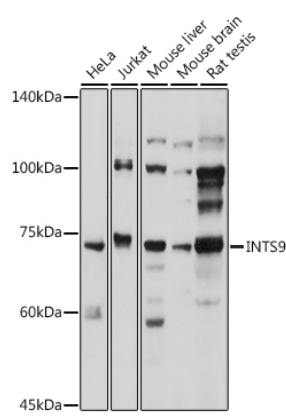
Affinity purification

#### Storage

Store at -20°C. Avoid freeze / thaw cycles.

Buffer: PBS with 0.02% sodium azide, 50% glycerol, pH7.3.

# Validation Data



Western blot analysis of various lysates using INTS9 Rabbit pAb (A10480) at 1:1000 dilution.  
Secondary antibody: HRP-conjugated Goat anti-Rabbit IgG (H+L) (AS014) at 1:10000 dilution.  
Lysates/proteins: 25µg per lane.  
Blocking buffer: 3% nonfat dry milk in TBST.  
Detection: ECL Basic Kit (RM00020).  
Exposure time: 5s.