

A10461

Leader in Biomolecular Solutions for Life Science



PHGDH Rabbit pAb

Catalog No.: A10461

6 Publications

Basic Information

Observed MW

57kDa

Calculated MW

57kDa

Category

Polyclonal Antibody

Applications

WB,IF/ICC,IP,ELISA

Cross-Reactivity

Human,Mouse,Rat

Background

This gene encodes the enzyme which is involved in the early steps of L-serine synthesis in animal cells. L-serine is required for D-serine and other amino acid synthesis. The enzyme requires NAD/NADH as a cofactor and forms homotetramers for activity. Mutations in this gene have been found in a family with congenital microcephaly, psychomotor retardation and other symptoms. Multiple alternatively spliced transcript variants have been found, however the full-length nature of most are not known.

Recommended Dilutions

WB 1:500 - 1:1000

IF/ICC 1:100 - 1:500

IP 0.5µg-4µg antibody for
200µg-400µg extracts
of whole cells

ELISA Recommended starting
concentration is 1
µg/mL. Please optimize
the concentration
based on your specific
assay requirements.

Immunogen Information

Gene ID

26227

Swiss Prot

O43175

Immunogen

Recombinant fusion protein containing a sequence corresponding to amino acids 264-533 of human PHGDH (NP_006614.2).

Synonyms

NLS; PDG; PGD; NLS1; PGAD; PGDH; SERA; 3PGDH; 3-PGDH; PHGDHD; HEL-S-113; PHGDH

Product Information

Source

Rabbit

Isotype

IgG

Purification

Affinity purification

Contact



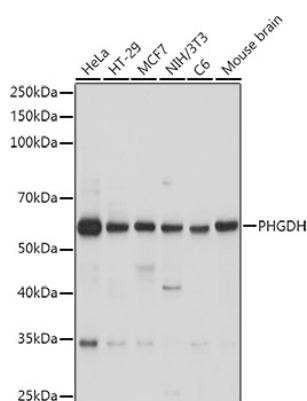
www.abclonal.com

Storage

Store at -20°C. Avoid freeze / thaw cycles.

Buffer: PBS with 0.09% Sodium azide, 50% glycerol, pH 7.3.

Validation Data



Western blot analysis of various lysates using PHGDH Rabbit pAb (A10461) at 1:1000 dilution.

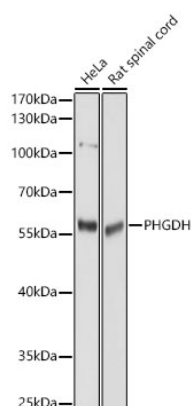
Secondary antibody: HRP-conjugated Goat anti-Rabbit IgG (H+L) (AS014) at 1:10000 dilution.

Lysates/proteins: 25µg per lane.

Blocking buffer: 3% nonfat dry milk in TBST.

Detection: ECL Basic Kit (RM00020).

Exposure time: 1s.



Western blot analysis of various lysates using PHGDH Rabbit pAb (A10461) at 1:1000 dilution.

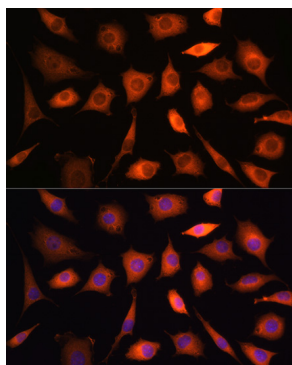
Secondary antibody: HRP-conjugated Goat anti-Rabbit IgG (H+L) (AS014) at 1:10000 dilution.

Lysates / proteins: 25 µg per lane.

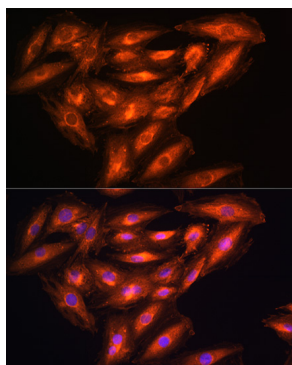
Blocking buffer: 3 % nonfat dry milk in TBST.

Detection: ECL Basic Kit (RM00020).

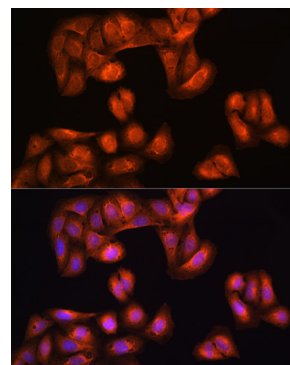
Exposure time: 5s.



Immunofluorescence analysis of L929 cells using PHGDH Rabbit pAb (A10461) at dilution of 1:100. Blue: DAPI for nuclear staining.

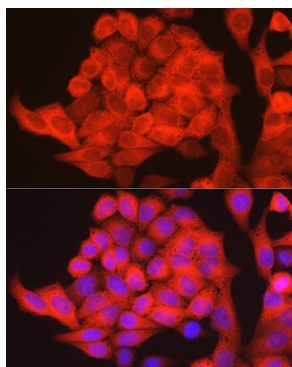


Immunofluorescence analysis of H9C2 cells using PHGDH Rabbit pAb (A10461) at dilution of 1:100. Blue: DAPI for nuclear staining.

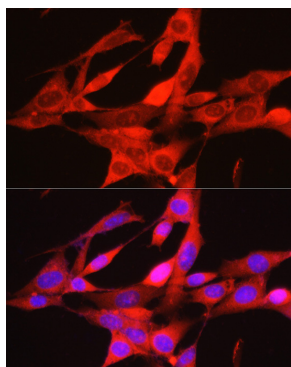


Immunofluorescence analysis of U2OS cells using PHGDH Rabbit pAb (A10461) at dilution of 1:100. Blue: DAPI for nuclear staining.

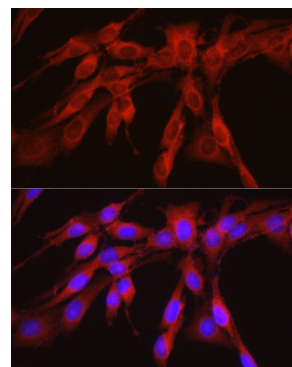
Validation Data



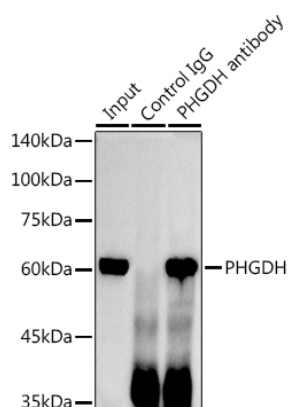
Immunofluorescence analysis of HeLa cells using PHGDH Rabbit pAb (A10461) at dilution of 1:300 (40x lens). Secondary antibody: Cy3-conjugated Goat anti-Rabbit IgG (H+L) (AS007) at 1:500 dilution. Blue: DAPI for nuclear staining.



Immunofluorescence analysis of NIH/3T3 cells using PHGDH Rabbit pAb (A10461) at dilution of 1:300 (40x lens). Secondary antibody: Cy3-conjugated Goat anti-Rabbit IgG (H+L) (AS007) at 1:500 dilution. Blue: DAPI for nuclear staining.



Immunofluorescence analysis of PC-12 cells using PHGDH Rabbit pAb (A10461) at dilution of 1:300 (40x lens). Secondary antibody: Cy3-conjugated Goat anti-Rabbit IgG (H+L) (AS007) at 1:500 dilution. Blue: DAPI for nuclear staining.



Immunoprecipitation analysis of 300 μ g extracts of HeLa cells using 3 μ g PHGDH antibody (A10461). Western blot was performed from the immunoprecipitate using PHGDH antibody (A10461) at a dilution of 1:1000.