

A10437

Leader in Biomolecular Solutions for Life Science



SLC6A15 Rabbit pAb

Catalog No.: A10437

Basic Information

Observed MW

82kDa

Calculated MW

82kDa

Category

Polyclonal Antibody

Applications

WB, ELISA

Cross-Reactivity

Mouse

Background

This gene encodes a member of the solute carrier family 6 protein family which transports neutral amino acids. The encoded protein is thought to play a role in neuronal amino acid transport (PMID: 16185194) and may be associated with major depression (PMID: 21521612). Multiple transcript variants encoding different isoforms have been found for this gene.

Recommended Dilutions

WB 1:500 - 1:2000

ELISA Recommended starting concentration is 1 µg/mL. Please optimize the concentration based on your specific assay requirements.

Immunogen Information

Gene ID

55117

Swiss Prot

Q9H2J7

Immunogen

Recombinant protein (or fragment). This information is considered to be commercially sensitive.

Synonyms

V7-3; NTT73; SBAT1; hv7-3; SLC6A15

Contact



www.abclonal.com

Product Information

Source

Rabbit

Isotype

IgG

Purification

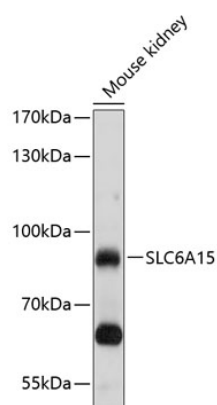
Affinity purification

Storage

Store at -20°C. Avoid freeze / thaw cycles.

Buffer: PBS with 0.02% sodium azide, 50% glycerol, pH 7.3.

Validation Data



Western blot analysis of lysates from mouse kidney, using SLC6A15 Rabbit pAb (A10437) at 1:1000 dilution.

Secondary antibody: HRP-conjugated Goat anti-Rabbit IgG (H+L) (AS014) at 1:10000 dilution.

Lysates/proteins: 25µg per lane.

Blocking buffer: 3% nonfat dry milk in TBST.

Detection: ECL Basic Kit (RM00020).

Exposure time: 30s.