

A10430

Leader in Biomolecular Solutions for Life Science



RFTN1 Rabbit pAb

Catalog No.: A10430

Basic Information

Observed MW

70kDa

Calculated MW

63kDa

Category

Polyclonal Antibody

Applications

WB,ELISA

Cross-Reactivity

Human,Mouse,Rat

Background

Enables double-stranded RNA binding activity. Involved in B cell receptor signaling pathway; membrane raft assembly; and positive regulation of growth rate. Acts upstream of or within dsRNA transport; response to exogenous dsRNA; and toll-like receptor 3 signaling pathway. Located in endosome; membrane raft; and plasma membrane. Part of protein-containing complex.

Recommended Dilutions

WB 1:500 - 1:2000

ELISA Recommended starting concentration is 1 µg/mL. Please optimize the concentration based on your specific assay requirements.

Immunogen Information

Gene ID

23180

Swiss Prot

Q14699

Immunogen

Recombinant fusion protein containing a sequence corresponding to amino acids 1-260 of human RFTN1 (NP_055965.1).

Synonyms

MIG2; PIG9; PIB10; RAFTLIN; RFTN1

Contact

 www.abclonal.com

Product Information

Source

Rabbit

Isotype

IgG

Purification

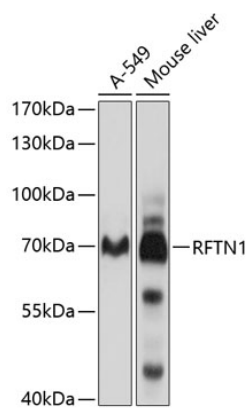
Affinity purification

Storage

Store at -20°C. Avoid freeze / thaw cycles.

Buffer: PBS with 0.02% sodium azide,50% glycerol,pH7.3.

Validation Data



Western blot analysis of various lysates using RFTN1 Rabbit pAb (A10430) at 1:1000 dilution.
Secondary antibody: HRP-conjugated Goat anti-Rabbit IgG (H+L) (AS014) at 1:10000 dilution.
Lysates/proteins: 25µg per lane.
Blocking buffer: 3% nonfat dry milk in TBST.
Detection: ECL Basic Kit (RM00020).
Exposure time: 5s.